

ADEPLAST®



GENERAL
CATALOG





Dear partners,

Thank you for the confidence granted to AdePlast company products. We are delighted to be together on a route towards success which is based on a simple key word: QUALITY.

Easy, but also complicated at the same time. Complicated because behind AdePlast QUALITY there are 25 years of hard work, continuous investments and research. We talk about millions of Euro, domestic capital, that the company invested along its operation, in the construction of the most modern factories of mortars, adhesives and polystyrene. And as at AdePlast we make things go properly, to last in time, investments did not stop either in 2018 and they shall not stop either further. We are proud of our newest achievement, 100% completed this year: the industrial **platform of Işalnița, Craiova.**

We are here due to an investment effort of 22 million Euros, we managed to build and to commission, in a record time period, the most modern production capacities at European level, in our business sector.

We reached number 1 position on a market with numerous competitors and we will maintain on such position due to our determination to make QUALITY things. For this, we rely on quite solid arguments: the newest technology of the sectors, professionals and state-of-art innovations that we implement in our products and that we present you in this catalogue.

Other QUALITY certification of AdePlast products lies in the fact that more and more international constructors started to search our products. Thus, we managed every single year to double the company exports both in the neighbourhood countries but also in areas where there is a real tradition and respect for what means the QUALITY of the construction materials. Distributors and constructors of Austria, Germany, Great Britain order AdePlast products constantly and return each time with new requests that we deliver promptly from the four industrial platforms: Moldovia, Muntenia, Transilvania and Oltenia.

We are awaiting any time at AdePlast with products available and deliverable as soon as possible.

AdePlast Team



*Marcel Barbut,
Chairman AdePlast*

A handwritten signature in white ink, which appears to be "Marcel Barbut". The signature is stylized and cursive, written on a dark background.

QUALITY AND SAFETY AT ITS BEST



About us

ADEPLAST company was established in 1996 at Oradea and has as line of business the production of construction materials. ADEPLAST has proved all these years dynamicity, thus it succeeded to develop every year. In accordance with the requirements of its customers and partners, ADEPLAST assumed its role of pioneer in the development of products and solutions adapted to the markets where it operates. ADEPLAST is ranked in Top 10 manufacturers of construction materials in Romania, besides multinational companies present on the local market.

The permanently ascending evolution of ADEPLAST included also the extension of its production capacities. Having as starting point the factory of dry mortars in Oradea, presently, after 18 years, ADEPLAST holds four industrial platforms, located strategically in Oradea (BH), Ploiești (PH) Roman (NT) and Ișalnița (DJ).

Evolution and perspectives

Upon the establishment of ADEPLAST company, the entrepreneur Marcel Bărbuț held 96% of shares, after an investment of 10 thousand dollars, equivalent of 31 million Lei at such time. The remaining shares were held by four shareholders with equal contributions of 8 dollars, namely 25 thousand Lei. The profit was distributed however equally. Within one year, the shareholders were entitled to redeem the shares. Out of the earned profit, the 4 shareholders redeemed their shares, thus each holding a 20% rate. In 2002 Marcel Bărbuț purchased from one shareholder other 10% of the shareholding against 125 thousand Euros. The same action is taken also by Flaviu Pop, the same managing to hold a 30% rate.

In 2005 Stefani family, with Marcel Bărbuț purchased the shares of Flaviu Pop and those of the fifth shareholder, in consideration of 5 million Euros. At this time, the two shareholders of ADEPLAST are: Marcel Bărbuț holding 60% of the shares and Stefani family, with 40%.

In 2007, Marcel Bărbuț purchased against 6 million Euros the shares of Stefani family and becomes the sole owner of ADEPLAST.

In 2007 Marcel Bărbuț sold one share to Cristina Paveliuc and converted the company into joint-stock company, intending to list the company on the stock exchange. The action aimed at bringing in the company the necessary capital for its development.

The 2008 crisis postpones the listing on the stock exchange, but does not appease the investment appetite of the entrepreneur. Even since 2008 Marcel Bărbuț invested massively in the company development by means of the capital earned by bank loans. One of the banks that cooperated with ADEPLAST since the beginning is UniCredit Țiriac Bank.



ADEPLAST

Competitor of
European size by
quality and
professionalism.

**"Always a reliable partner
for the future of your
construction."**

BRIEF HISTORY OF THE COMPANY

2018 – the industrial platform of Işalnița is completed

2017 – ADEPLAST establishes a new industrial platform at Işalnița near Craiova

2014 – ADEPLAST increases its production capacity at the polystyrene factory of Ploiești from 700 thousand m³ to 1050 thousand m³

2013 August – ADEPLAST undertakes the operations of Schomburg România

2013 August – ADEPLAST completes a factory of paints and decorative plasters of Ploiesti industrial platform

2013 May – ADEPLAST starts the polystyrene company of Oradea platform

2013 April – the third industrial platform of ADEPLAST starts its production at Roman

2013 March – ADEPLAST undertakes Düfa operations in Romania

2012 November – the production line for graphite polystyrene of Ploiești is opened and we already talk about two industrial platforms of ADEPLAST

2011 May – the drying – sieving installation of the dry mortars factory in Oradea is commissioned

2008 September – the dry mortars factory of Ploiești is opened

2008 July – the paints and decorative plasters factory of Oradea is opened

2007 – Multistar Prod S.R.L. is converted into ADEPLAST S.A joint-stock company

2005-2007 – the company motor vehicle fleet is completed

2004 June – the actual dry mortars factory of Oradea is opened

1996 – Marcel Bărbuț became the shareholder of the company whose line of business was the manufacturing of adhesive mortars for ceramic tiles, plasters, screeds, industrial floors and mechanized mortars under ADEPLAST® trademark

1994 – it is established at Oradea, under the name of Multistar Prod S.R.L.

ADEPLAST manufactures presently over 50 assortments of construction materials. We hold in Romania new production capacities in the sector of dry mortars, decorative plasters, paints and thermo-insulating materials. There is no doubt that we are one of the most important players of the European market of the industry. ADEPLAST company created hundreds of workplaces, developed partnerships with distributors, constructors, carriers and other various suppliers, contributed significantly at the local budgets and supported permanently the development of the areas where it operates. We invested and upgraded permanently, so as we are ready for any challenge. It is obvious that we are a fearsome competitor, but a desirable partner.

INDUSTRIAL PLATFORM OF PLOIEȘTI (PH)

DRY MORTARS FACTORY

With a production capacity of 450.000 tons of adhesive and dry mortars, it ensures the production for the central and southern area of the country, as well as the export for **SOUTHERN EUROPE**.

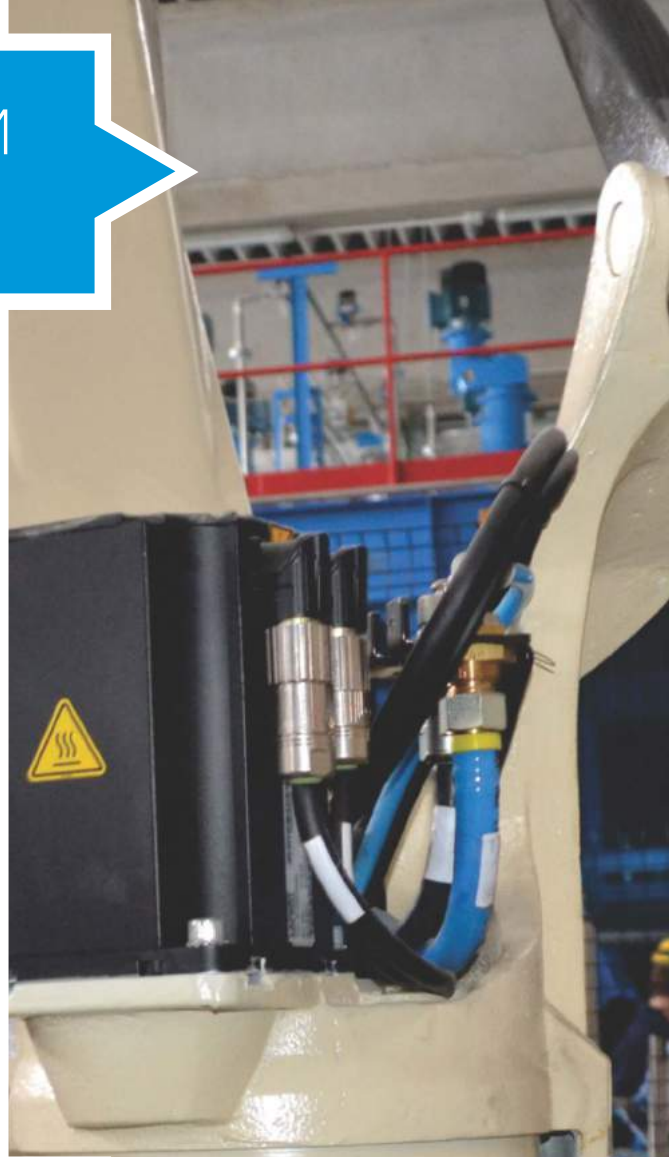
For the production efficiency, but also the delivery of adhesives and dry mortars, ADEPLAST developed in Ploiești generous storage premises based on a perfect logistic system.

EXPANDED POLYSTYRENE FACTORY (EPS)

It is the most modern production line of polystyrene (EPS) at national level, with an annual capacity of 1.050.000 m³. The initial equipment investment was approximately 3.7 million Euros, and the total investment amount was over 4.2 million Euros. It was from own sources. The factory equipment is state-of-art technology at European level and comes from Italy, Austria and Slovenia. ADEPLAST production line of graphite polystyrene of Ploiești has a capacity of 150.000 de m³.

PAINTS AND DECORATIVE PLASTERS FACTORY

The paints and decorative plasters factory of Ploiești industrial platform was completed by an investment of 3.2 million Euros. The factory is fully automatic and has an installed capacity of 50.000 t/year.



INDUSTRIAL PLATFORM OF ORADEA (BH)

DRY MORTARS FACTORY

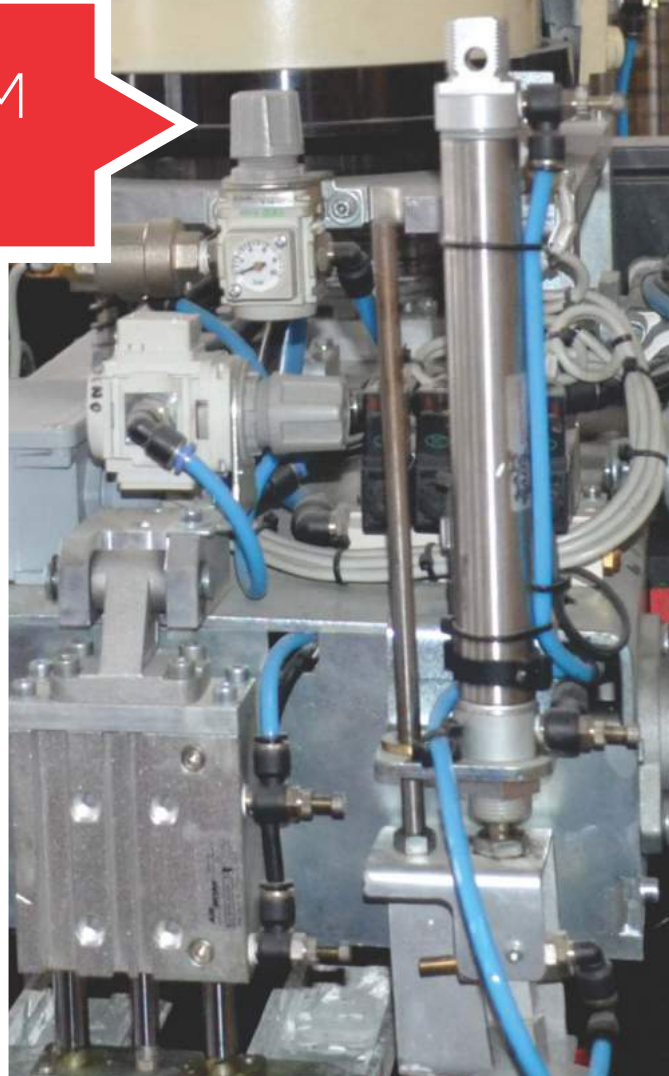
250.000 tons of dry mortars are manufactured here annually. 25-40% of the production is intended for export to **HUNGARY, SLOVAKIA, GERMANY and AUSTRIA**. ADEPLAST purpose is to export from here fully the parts of a performing thermal system (adhesives, polystyrene, filler, decorative plasters).

EXPANDED POLYSTYRENE FACTORY (EPS)

It has a capacity of 700.000 m³ per year and it is one of the two such lines of Romania, since it may produce also white polystyrene (EPS) and graphite polystyrene, being executed in cobranding with the Germans of BASF. The total designed capacity for the production of normal expanded polystyrene and graphite polystyrene in the premises of **ORADEA, ROMAN** and **PLOIEȘTI** is 2.600.000 de m³/year.

PAINTS AND DECORATIVE PLASTERS FACTORY

The total production capacity of the factory is 50.000 t/year, washable paints and decorative plasters. The activity over here is fully automatic.



INDUSTRIAL PLATFORM OF ROMAN (NT)

DRY MORTARS FACTORY

450.000 tons of adhesives and dry mortars are produced here on annual basis. The factory serves for MOLDOVA area and the SOUTHERN EUROPE countries.

EXPANDED POLYSTYRENE FACTORY (EPS)

It has an installed capacity of 700.000 m³ per year. It is the second line of such type of ROMANIA and EUROPE.

INDUSTRIAL PLATFORM OF IȘALNIȚA (DJ)

DRY MORTARS FACTORY

250.000 tons of dry mortars are manufactured here annually. 25-40% of the production is intended for export to **HUNGARY**, **SLOVAKIA**, **GERMANY** and **AUSTRIA**. ADEPLAST purpose is to export from here fully the parts of a performing thermal system (adhesives, polystyrene, filler, decorative plasters).

EXPANDED POLYSTYRENE FACTORY (EPS)

It has a capacity of 700.000 m³ per year and it is one of the two such lines of Romania, since it may produce also white polystyrene (EPS) and graphite polystyrene, being executed in cobranding with the Germans of BASF. The total designed capacity for the production of normal expanded polystyrene and graphite polystyrene in the premises of **ORADEA**, **ROMAN** and **PLOIEȘTI** is 2.600.000 de m³/year.





INTERNATIONAL PARTNERSHIPS



The smartest choice!

CONTACT DETAILS

Ploiești



Oradea



Corlătești Headquarters

Street Adeplast no. 164A,
107063, County Prahova
Tel.: +40 244 338 000
Fax: +40 244 338 004

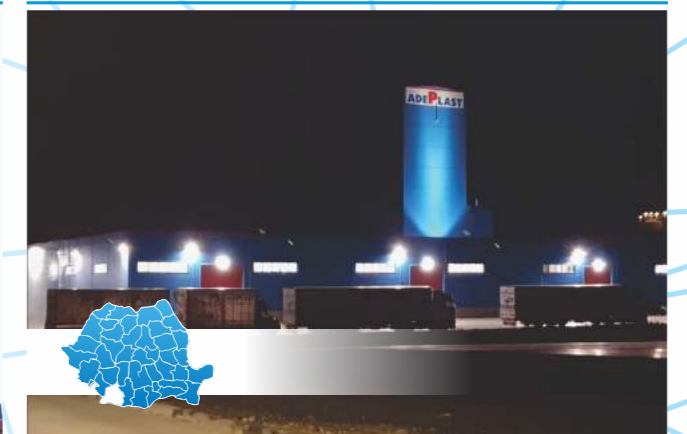
Industrial Platform of Oradea

Street Uzinelor no. 3,
410605, County Bihor
Tel.: +40 259 403 751
Fax: +40 259 403 762

Roman



Craiova



Industrial Platform of Roman

Street AdePlast no. 1,
617135, County Neamț
Tel.: +40 233 748 856
Fax: +40 233 748 852

Industrial Platform of Ișalnița

Street Mihai Viteazul
207340, County Dolj
Tel.: +40 749 233 433

WE INNOVATE FOR YOUR FUTURE



Adhesive and mortars
division:

Wide range of over 150 products of all segments - adhesives, fillers, plastering and masonry mortars, skim plasters, finishing mortar, mobile silos. 1,6 million tons/year - production capacities



Thermo insulation
division:

ETAG 004 certified complete thermo-insulation systems consisting of premium products in the range of expanded polystyrene, graphite polystyrene, basalt mineral wool 3,3 million m³/year - production capacities.



Paints
division:

Wide range of products intended for professional use and not only, super washable and antibacterial paints, thermo-insulating and hydrophobic paints, decorative plasters. 100.000 tons/year - production capacities



office@adeplast.ro



+40 244 338 000



www.adeplast.ro



LEGEND

- 1** Adhesives for tiles
- 2** Adhesives for thermoinsulation
- 3** Screeds and industrial floor
- 4** Mortars for masonry
- 5** Plastering mortars
- 6** Finishing mortar
- 7** Skim plasters for filling and finishing
- 8** Gypsum board system
- 9** Decorative plasters
- 10** Concrete for torcreating
- 11** Repair and restoration mortars

TABLE OF CONTENTS

DRY MORTARS

Adhesives for tiling	11
Adhesives for thermal insulation	21
Industrial screeds	25
Plastering mortars	29
Mortars for masonry	33
Finishing mortar	39
Skim plasters for filling and finishing	43
Gypsum board system	47
Decorative plasters	49
Concrete for torcreting	51
Repair and restoration mortars	53

THERMAL INSULATION

Polystyrene for facade	59
Polystyrene for roofs	63
Polystyrene for terraces	67
Premium thermosystem	71

PAINTS AND DECORATIVE PLASTERS

Interior paints	77
Exterior paints	85
Decorative plasters	89
Water-based primers and lasers	93
Impregnants, primers, plasters	95
Glue	103



**ADHESIVES
FOR TILES**



AFX-9

Adhesive for interior tile with POLIMER 1000 X



Characteristics

- Adhesive for interior
- High adhesion
- Easy processing

Specific consumption

approx. 3-4kg/m²

Packaging

Paper bags of 25kg
1 pallet = 48 bags = 1200kg

Scopes of application

Adhesive for tiling on interior with POLIMER 1000X – special state-of-art ingredient which increases the adhesion and provides an increased processing. The adhesive is applied on a thin layer, on absorbing mineral supports, cement plastering and cement lime, aerated autoclaved cement, concrete, cement based screed and any other such.

AFX-11 PLUS

Adhesive for interior and exterior with POLIMER 1000 X



Characteristics

- Adhesive for interior and exterior
- High adhesion
- Easy processing

Specific consumption

approx. 3-4kg/m²

Packaging

Paper bags of 25kg
1 pallet = 48 bags = 1200kg

Scopes of application

Adhesive for tiling on interior with POLIMER 1000X – special state-of-art ingredient which increases the adhesion and provides an increased processing. The adhesive is applied on interior and exterior, in wet or dry premises, exposed to freeze/thaw, temperatures between -25°C and+ 80°C, on a thin layer, on absorbing mineral supports, cement plastering and cement lime, aerated autoclaved cement, concrete, cement based screed and any other such.

AFX-17

Superflexible adhesive for tiles and natural stones



Characteristics

- Adhesive for interior and exterior
- High adhesion, Low slipping
- Extended processing time
- For pools tiling

Specific consumption

approx. 3-4kg/m²

Packaging

Paper bags of 25kg
1 pallet = 48 bags = 1200kg

Scopes of application

Adhesive for tiling with PORUS X ensuring a high flexibility. Adhesive for tiles and building stones, ceramic tile, artificial stone, clinker, marble and natural stone, without discolouration risk, with or without absorption, on walls and floors, on interior and exterior, in wet or dry premises, exposed to freeze/thaw, temperatures between -25°C and+ 80°C, on a thin layer, on mineral supports with or without absorption, cement plastering and cement lime, aerated autoclaved cement, concrete, cement based screed, old tiles and building stones, cement washed concrete, gypsum boards, etc.





AF-E

Adhesive for exterior tiling



Characteristics

- Adhesive for interior and exterior
- High adhesion
- Increased processing
- Low slipping

Specific consumption

approx. 3-4kg/m²

Packaging

Paper bags of 25kg
1 pallet = 48 bags = 1200kg
Plastic bags of 5kg
1 pallet = 140 bags = 700kg

Scopes of application

Adhesive for tiling (tiles and building stones), with absorption, on interior and exterior, on a thin layer, on absorbing mineral supports, cement plastering and cement lime, aerated autoclaved cement, concrete, cement based screed and any other such, in wet or dry premises, exposed to freeze/thaw, temperatures between -20°C și + 80°C.

AF-I

Adhesive for interior tiling



Characteristics

- Adhesive for interior
- High adhesion
- Low slipping

Specific consumption

approx. 3-4kg/m²

Packaging

Paper bags of 25kg
1 pallet = 48 bags = 1200kg
Plastic bags of 5kg
1 pallet = 140 bags = 700kg

Scopes of application

Adhesive for tiling on interior, on a thin layer, on absorbing mineral supports, cement plastering and cement lime, aerated autoclaved cement, concrete, cement based screed and any other such



AF-N

Superplastic, high resistant adhesive, for tiling



Characteristics

- Adhesive for interior and exterior
- High adhesion
- Increased processing
- Low slipping
- Freeze/thaw resistant

Specific consumption

approx. 3-4kg/m²

Packaging

Paper bags of 25kg
1 pallet = 48 bags = 1200kg

Scopes of application

Adhesive for tiling, tiles and building stones, ceramic tile, artificial stone, clinker, with or without absorption, on walls and floors, on interior and exterior, in wet or dry premises, exposed to freeze/thaw, temperatures between -25°C and + 80°C, on underfloor heating, on a thin layer, on mineral supports with or without absorption, cement plastering and cement lime, aerated autoclaved cement, concrete, cement based screed, old tiles and building stones, cement washed concrete, gypsum boards, etc.

AF-S ALB

Superflexible white, high resistant adhesive



Characteristics

- Adhesive for interior and exterior
- High adhesion
- Extended processing time,
- Freeze/thaw resistant
- For underfloor heating

Specific consumption

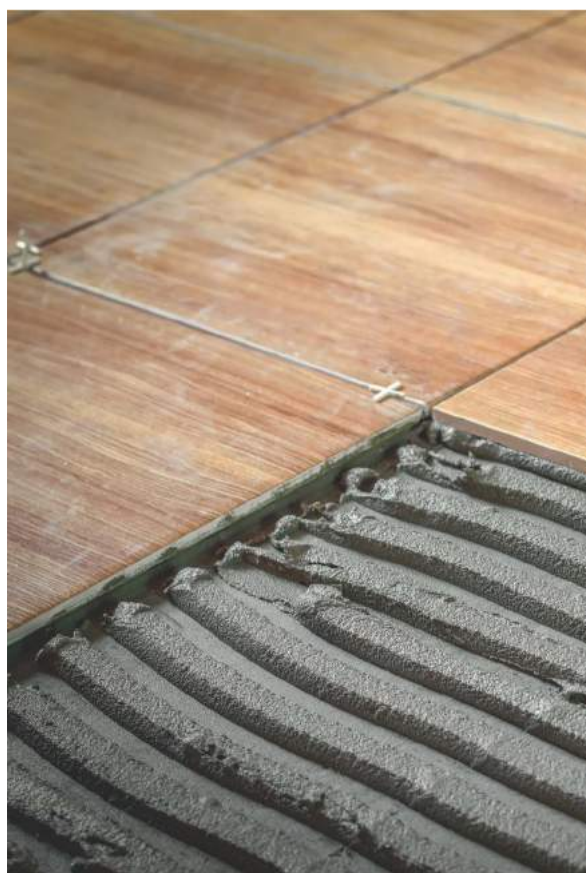
approx. 3-4kg/m²

Packaging

Paper bags of 25kg
1 pallet = 48 bags = 1200kg

Scopes of application

Adhesive for tiling, tiles and building stones, ceramic tile, artificial stone, clinker, marble and natural stone, with or without absorption, on walls and floors, on interior and exterior, in wet or dry premises, exposed to freeze/thaw, temperatures between -25°C and +80°C, on a thin layer, on mineral supports with or without absorption, cement plastering and cement lime, aerated autoclaved cement, concrete, cement based screed, old tiles and building stones, cement washed concrete, gypsum boards, including for tiling swimming pools or water tanks.



AF-S GRI

Superflexible gray, high resistant adhesive



Characteristics

- Adhesive for interior and exterior
- High adhesion
- Extended processing time,
- Freeze/thaw resistant, for
- underfloor heating

Specific consumption

approx. 3-4kg/m²

Packaging

Paper bags of 25kg
1 pallet = 48 bags = 1200kg

Scopes of application

Adhesive for tiling, tiles and building stones, ceramic tile, artificial stone, clinker, marble and natural stone, with or without absorption, on walls and floors, on interior and exterior, in wet or dry premises, exposed to freeze/thaw, temperatures between -25°C and +80°C, on a thin layer, on mineral supports with or without absorption, cement plastering and cement lime, aerated autoclaved cement, concrete, cement based screed, old tiles and building stones, cement washed concrete, gypsum boards, including for tiling swimming pools or water tanks.

AF-11+ Porzellano

Adhesive for ceramic tiles, on interior and exterior



Characteristics

- Adhesive for interior and exterior
- High adhesion
- Extended processing time
- Low slipping
- For ceramic tiles

Specific consumption

approx. 3-4kg/m²

Packaging

Paper bags of 25kg
1 pallet = 48 bags = 1200kg

Scopes of application

Adhesive for ceramic tiles, on interior and exterior, with low water absorption, in wet or reduced premises exposed to freeze/thaw, temperatures between -25°C and +80°C. According to the support absorption, it is subject to primer or moisture accordingly.



MARMOREX ALB

Adhesive for marble, granite and tile - granite



- Characteristics**
- Adhesive for interior and exterior
 - High adhesion
 - Increased processing for marble and granite
 - Freeze/thaw resistant

Specific consumption
approx. 3-4kg/m²

Packaging
Paper bags of 25kg
1 pallet = 48 bags = 1200kg

Scopes of application

Adhesive for sticking big dimension sandstone, tiling with marble and other types of natural stone, on high stress surfaces, on interior and exterior, including in freezers or over underfloor heating, in wet or dry premises, exposed to freeze/thaw, temperatures between -25°C and +90°C, on a thin layer, on mineral supports with or without absorption, cement plastering and cement lime, aerated autoclaved cement and other such. Product compatible to marble tiling due to the adhesive hydrophobicity which blocks the salt penetration of the support layer.

FIX STONE ALB/GRI

White/gray adhesive for natural stone



- Characteristics**
- Adhesive for interior and exterior
 - High adhesion Increased processing
 - For natural stone
 - Freeze/thaw resistant

Specific consumption
approx. 3-4kg/m²

Packaging
Paper bags of 25kg
1 pallet = 48 bags = 1200kg

Scopes of application

Adhesive for natural stone, medium absorption, ornamental brick, ceramic tiles, on interior and exterior, in wet or dry premises, exposed to freeze/thaw, temperatures between -25°C and +80°C, on a thin layer, on mineral supports with or without absorption, cement plastering and cement lime, aerated autoclaved cement, concrete, cement based screeds and any other such, where a high water-proofing of the material is necessary.

MARMOREX GRI

Adhesive for marble, granite and sandstone - granite



- Characteristics**
- Adhesive for interior and exterior
 - High adhesion
 - Increased processing
 - For marble and granite
 - Freeze/thaw resistant

Specific consumption
approx. 3-4kg/m²

Packaging
Paper bags of 25kg
1 pallet = 48 bags = 1200kg

Scopes of application

Adhesive for sticking big dimension sandstone, tiling with marble and other types of natural stone, on high stress surfaces, on interior and exterior, including in freezers or over underfloor heating, in wet or dry premises, exposed to freeze/thaw, temperatures between -25°C and +90°C, on a thin layer, on mineral supports with or without absorption, cement plastering and cement lime, aerated autoclaved cement and other such. Product compatible to marble tiling due to the adhesive hydrophobicity which blocks the salt penetration of the support layer.

QK-6

Flexible kit for jointing of ceramic tiles, 2 –6 mm



Characteristics

- Weather and UV resistant
- High adhesion
- Easy processing
- Colour time stability
- Sealed packaging long term storage, 2 years

Specific consumption

- 1 mm joint**, tile 50x50 cm, approx 0,04 kg/m²
- 5 mm joint**, tile 50x50 cm, approx 0,20 kg /m²

Packaging

Plastic bags of 2kg
Plastic bags of 5kg
1 pallet = 140 bags= 1200kg

Scopes of application

Product applicable on interior and exterior on surfaces exposed to temperatures between -20°C and +80°C, with or without moisture, for joints sized between 2-6mm. It is used for the joining of the ceramic tiles, sandstone, marble, natural stone which is free of discolouration risk, sandstone-granite, porcelain sandstone, mosaic, glass brick of Nevada type.



QK-7

Aquastatic kit for joining, ceramic tiling 2- 7mm



Characteristics

- Weather and UV resistant
- High adhesion
- Aquastatic
- High time stability

Specific consumption

- 1 mm joint**, tile 50x50 cm, approx 0,04 kg/m²
- 5 mm joint**, tile 50x50 cm, approx 0,20 kg /m²

Packaging

5kg bucket

Scopes of application

Product applicable on interior and exterior on surfaces exposed to temperatures between -20°C and +80°C, with or without moisture, for big sized joints. The product is used for the joining of the ceramic tiles, sandstone, marble, natural stone which is free of discolouration risk, sandstone-granite, porcelain sandstone, mosaic, glass brick of Nevada type.

MH-1K

Monocomponent waterproofing



Characteristics

- High adhesion
- Easy processing
- Waterproofing membrane

Specific consumption

approx. 3-5kg/m²

Packaging

Paper bags of 25kg
1 pallet = 48 bags = 1200kg

Scopes of application

Product for the waterproofing of terraces, balconies, pools, water tanks prior to the ceramic tiling or tiling with natural stone. The tiling in this system is mandatorily made by flexible adhesive AF-S gray or AF-S white, as applicable. The 0.8 mm granulation provides the surface with a high roughness for facilitating the adhesion. The product is not used on tanks with a depth over 4 metres, on supports with salt blooms or on fragile supports.



KIT FOR JOINING OF CERAMIC TILING

Weather and UV resistant



High adhesion



Colour time stability



QK-6

QUARZKIT 2-6 mm
FLEXIBLE, AQUASTATIC



*The colour samples printed in the catalogue are informatively.

ADEPLAST®

KIT FOR JOINING OF
CERAMIC TILING

Colour time
stability



High
adhesion



Weather
resistance



QK-7

KIT FOR JOINING OF CERAMIC
TILING 2-7 mm



*The colour samples printed in the catalogue are informatively.



A woman with long, wavy blonde hair is sitting on a brown leather sofa in a rustic wooden cabin. She is wearing a light blue t-shirt and a white knitted cardigan. She is holding a black and white striped mug with both hands and looking out a large window to her right. The window shows a view of a snowy mountain landscape. The cabin walls are made of light-colored wood. The overall atmosphere is warm and cozy.

ADEPLAST®

Adhesives for
thermal insulation

**ADHESIVES FOR
THERMAL INSULATION**

POLISTIROL PREMIUM

Adhesive and plasterboard for polystyrene thermal insulation boards.



Characteristics

- High strength
- High adhesion
- Easy processing
- High flexibility

Specific consumption

Gluing: approx 2.5-3.5 kg/m²
(by 8x8mm grouter)
approx. 4-5 kg/m²
(by 10x10mm grouter)

Plastering: approx. 3.9-5.5kg/m²

Packaging

Paper bags of 25kg
1 pallet = 48 bags = 1200kg



Scopes of application

Adhesive mortar for gluing and plastering on thermal or phonic insulation works by thermo insulation boards of white expanded and graphite polystyrene for façade, on interior and exterior, on concrete and plaster, brick and other such. Component product of ADEPLAST IZOTHERM system.



ADEZIV POLISTIREN PROIECT

Adhesive and plasterboard for polystyrene thermal insulation boards.



Characteristics

- High strength
- High adhesion
- Easy processing

Specific consumption

Gluing: approx 2.5-3.5 kg/m²
(by 8x8mm grouter)
approx. 4-5 kg/m²
(by 10x10mm grouter)

Plastering: approx. 3.9-5.5kg/m²

Packaging

Paper bags of 30kg
1 pallet = 42 bags = 1260kg

Scopes of application

Adhesive mortar for gluing and plastering on thermal or phonic insulation works by thermo insulation boards of expanded polystyrene, on interior and exterior, on concrete, plaster, brick and other such.



LAROO MINERALWOOL KLEBER

Adhesive for mineral basaltic wool



Characteristics

- Very good adhesion of mineral wool on supports
- Easy processing
- High strength,
- High flexibility

Specific consumption

Gluing: approx. 2.5-3.5 kg/m²
(by 8x8mm grouter)
approx. 4-5 kg/m²
(by 10x10mm grouter)

Plastering: approx. 3.9-5.5kg/m²

Packaging

Paper bags of 25kg
1 pallet = 48 bags = 1200kg

Scopes of application

Adhesive mortar for interior or exterior works for application of mineral wool boards, on mineral supports such as: plasters, concrete, aerated autoclaved cement, masonry blocks etc.

O.S.B KLEBER

Adhesive for expanded polystyrene for interior and exterior, on OSB support



Characteristics

- High strength
- Easy processing
- High adhesion
- High flexibility

Specific consumption

Gluing: approx. 2.5-3.5 kg/m²
(by 8x8mm grouter)
approx. 4-5 kg/m²
(by 10x10mm grouter)

Plastering: approx. 3.9-5.5kg/m²

Packaging

Paper bags of 25kg
1 pallet = 48 bags = 1200kg

Scopes of application

Adhesive mortar for gluing and plastering on interior and exterior works for application of thermal insulation boards or expanded polystyrene ornaments, on OSB, PAL supports etc.; intended for expanded and extruded polystyrene plating (of façade), on classic supports, in extreme climate areas (mountain areas with low temperatures etc.).



POLISTIROL PREMIUM ALB

White colour adhesive and plasterboard for polystyrene thermal insulation boards



Characteristics

- High strength
- High adhesion
- Easy processing
- High flexibility

Specific consumption

Gluing: approx 2.5-3.5 kg/m²
(by 8x8mm grouter)
approx.4-5 kg/m²
(by 10x10mm grouter)
Plastering: approx. 3.9-5.5kg/m²

Packaging

Paper bags of 25kg
1 pallet = 48 bags= 1200kg

Scopes of application

White adhesive mortar for gluing and plastering on thermal or phonic insulation works by thermal insulation boards of expanded polystyrene, on interior and exterior, on concrete, plaster, brick and other such.

PFX-25

Adhesive and plasterboard with reinforcement fibres for polystyrene thermal insulation boards



Characteristics

- High strength
- High adhesion
- Easy processing
- High flexibility

Specific consumption

Gluing: approx 2.5-3.5 kg/m²
(by 8x8mm grouter)
approx.4-5 kg/m²
(by 10x10mm grouter)
Plastering: approx. 3.9-5.5kg/m²

Packaging

Paper bags of 25kg
1 pallet = 48 bags= 1200kg

Scopes of application

Adhesive mortar with reinforcement fibres for gluing and plastering on thermal or phonic insulation works by thermal insulation boards of expanded polystyrene, on interior and exterior, on concrete, plaster, brick and other such.

POLISTIROL ECO

Adhesive for polystyrene thermal insulation boards on interior and exterior



Characteristics

- High strength
- High adhesion
- Easy processing

Specific consumption

Gluing: approx 2.5-3.5 kg/m²
(by 8x8mm grouter)
approx.4-5 kg/m²
(by 10x10mm grouter)

Packaging

Paper bags of 23kg
1 pallet = 48 bags = 1104kg

Scopes of application

Adhesive mortar for gluing on thermal or phonic insulation works by thermal insulation boards of expanded polystyrene, on interior and exterior, on concrete, plaster, brick and other such.

POLISTIROL ECO PLUS

Adhesive for polystyrene thermal insulation boards on interior and exterior



Characteristics

- High strength
- High adhesion
- Easy processing

Specific consumption

Gluing: approx 2.5-3.5 kg/m²
(by 8x8mm grouter)
approx.4-5 kg/m²
(by 10x10mm grouter)

Packaging

Paper bags of 25kg
1 pallet = 48 bags = 1200kg

Scopes of application

Adhesive mortar for gluing and plastering on thermal or phonic insulation works by thermal insulation boards of expanded polystyrene, on interior and exterior, on concrete, plaster, brick and other such.



ADEPLAST®

Screeds and
industrial
flooring

**SCREEDS AND
INDUSTRIAL FLOORING**

ŞAPĂ TOP 1



Cement-based screed for interior and exterior

Characteristics

- High strength
- Smooth surface
- For heavy traffic surfaces

Specific consumption

approx. 19 kg/m²/cm

Packaging

Paper bags of 30kg
1 pallet = 42 bags = 1260kg
Bulk in mobile silo

Scopes of application

Cement-based screed for application on interior and exterior on usual surfaces, as support for self-levelling screed, for heavy traffic surfaces, for civil and industrial engineering, in layer between 30-80 mm. It may be applied also mechanized. The product may be delivered in bulk, in mobile silo.



ŞAPĂ TOP 2



Cement-based screed for interior and exterior

Characteristics

- High strength
- Smooth surface
- For light traffic surfaces

Specific consumption

approx. 19 kg/m²/cm

Packaging

Paper bags of 30kg
1 pallet = 42 bags = 1260kg
Bulk in mobile silo

Scopes of application

Cement-based screed for application on interior and exterior on usual surfaces, for light traffic surfaces, housing, offices, buildings, in layer between 30-80 mm. The product may be delivered in bulk, in mobile silo.

ŞAPĂ AUTONIVELANTĂ 2-10mm



Self-levelling cement - based screed (SA), for interior

Characteristics

- Final smooth surface
- Easy processing material
- High strength

Specific consumption

approx. 1.6-1.8 kg/m²/mm

Packaging

Paper bags of 25kg
1 pallet = 48 bags = 1200kg

Scopes of application

Self-levelling screed for application on interior on 2-10 mm layer, for the equalization of cement-based screeds and concrete surfaces for finishing with linoleum, PVC, carpet, parquet, sandstone etc. It may be applied also mechanized.



ȘAPĂ AUTOŃIVELANTĂ RAPIDĂ 2-10mm

Fast self-levelling cement-based screed (SAR) for interior



Characteristics

- Final smooth surface
- Easy processing material
- High strength
- Light traffic approx. 3 hours after the application

Specific consumption

approx. 1.5-1.8 kg/m²/mm

Packaging

Paper bags of 25kg
1 pallet = 48 bags = 1200kg
Bulk in mobile silo

Scopes of application

Self-levelling screed for application on interior on 2-10 mm layer, for the equalization of cement-based screeds and concrete surfaces for finishing with linoleum, PVC, carpet, parquet, sandstone etc.

PIC 300

Industrial coloured floor



Characteristics

- Easy workability
- High hardness
- Very good adhesion
- Perfect aspect
- Attrition resistance

Specific consumption

approx. 4-5

Packaging

Paper bags of 30kg
1 pallet = 42 bags = 1260kg

Scopes of application

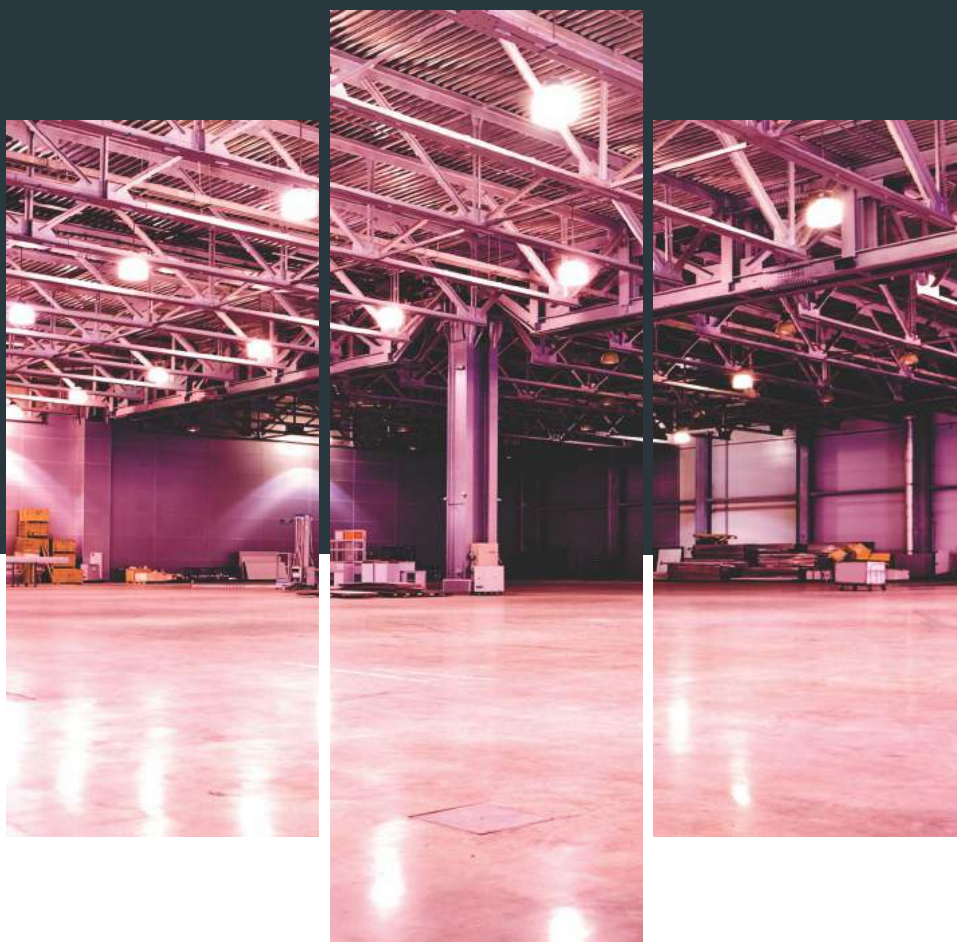
Industrial coloured floor used for obtaining resistant and lasting surfaces in industrial halls and heavy traffic premises (shops, warehouses, schools, hospitals etc.). The product is applied only on mineral supports.



PIC300

ADEPLAST®

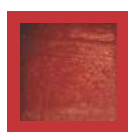
industrial coloured floor



Are you looking for the perfect surface?

Do you want to customize the floor colour? Select any of the available colours:

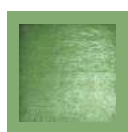
*the presented colours are informative



251



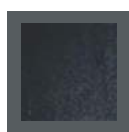
470



571



671



901



851



751



831

Easy workability

High hardness

Very good adhesion

Perfect aspect

Attrition resistance



ADEPLAST®

Masonry
mortars

MASONRY MORTARS

ADEPLAST®

SEMI-MECHANIZED BUILDING OF BRICK BLOCKS

ADVANTAGES

- ✓ Increased productivity from 3 up to 5 times
- ✓ Remove material losses and thefts
- ✓ Constant quality of the prepared material
- ✓ Environment-friendly storage (remove plastic, paper packages)
- ✓ A higher cleanliness is maintained at the workplace

STORAGE

By the mobile silo, a constructor may control exactly the material quantity and the used recipe. The silo and the pump delivered with it, remove the use of the bucket for the material transport on the upper floors.

Actually, constructors increase considerably the productivity per employee.

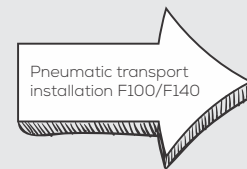
STIRRING

It is realized by means of the continuous stirring mixers m-tec D20 and m-tec D30m

CONSTRUCTION



18m³ silo



m-tec D20



m-tec D30



Classic brick



Hole brick



Light concrete blocks

MZ STICLĂ ALB/GRI

Mortar for building
white / gray glass bricks



Characteristics

- Easy workability
- Very good adhesion to glass

Specific consumption

25 kg/3.5m²/joints 10mm

Packaging

Paper bags of 25kg
1 pallet = 48 bags = 1200kg



Scopes of application

White/gray mortar used for building glass walls. Mortar may be used under optimal conditions in bathrooms and kitchens.



MZ-5

Mortar for building
blocks of concrete and
brick



Characteristics

- Low consumption
- Application in comb
- Very good adhesion
- High controlled brand

Specific consumption

approx. 15-18kg/m²/cm

Packaging

Paper bags of 30kg
1 pallet = 42 bags = 1260kg
Bulk in mobile silo

Scopes of application

Mortar for building constructions with blocks of concrete, brick or light concrete blocks. Mortar is recommended particularly for hole bricks due to the consistent bed which may be realized between bricks, which leads to a low consumption. It may be applied also mechanized. The product may be delivered in bulk, in mobile silo with D30 stirring mixer.



MZ BCA

Mortar adhesive for AAC masonry



Characteristics

- High strength
- Smooth surface
- Easy processing

Specific consumption

3,8-9,5kg/m², according to the size and type of the bricks

Packaging

Paper bags of 25kg
1 pallet = 48 bags= 1200kg
Bulk in mobile silo

Scopes of application

Mortar adhesive for application in thin layer, maximum 5 mm on the building of blocks of cell autoclaved concrete BCA, YTONG, etc. It may be used as mechanized. The product may be delivered in bulk, in mobile silo with D30 stirring mixer.

MZ 100

Mortar for building blocks of concrete and brick



Characteristics

- Easy workability
- Very good adhesion
- High controlled brand

Specific consumption

approx 15-18 kg/m² at 1cm thickness
≈156 kg dry mortar/1 m³ hole bricks

Packaging

Paper bags of 30kg
1 pallet = 42 bags 1260kg
Bulk in mobile silo

Scopes of application

Mortar for building constructions with blocks of concrete, brick or light concrete blocks, bearing brick, masonry structures. It may be used as mechanized. The product may be delivered in bulk, in mobile silo with D30 stirring mixer.



ADEPLAST®



Plastering
mortars

**PLASTERING
MORTARS**

MTiG 20 SL

Mortar based on gypsum for plaster



Characteristics

- High adhesion
- Application of 2,5 cm in a single layer, minimum thickness of 10mm
- Finished surface at slat level
- Excellent thermal insulation
- Low consumption

Specific consumption

approx. 6-7kg/m²/cm

Packaging

Paper bags of 25kg
1 pallet = 40 bags= 1000kg
Bulk in mobile silo

MTiG ENERGY

Mortar based on gypsum for plaster



Characteristics

- High adhesion
- Excellent thermal insulation
- Low consumption

Specific consumption

approx. 10-11 kg /m²/cm

Packaging

Paper bags of 30kg
1 pallet = 42 bags= 1260kg
Bulk in mobile silo

Scopes of application

Mortar based on gypsum for plaster. Product used on interior on ceramic masonry, aerated autoclaved concrete, concrete. Mortar for manual or mechanized application in premises without high exposure to moisture. The product may be delivered in bulk, in mobile silo.

Scopes of application

Mortar based on gypsum for plaster with application on interior on ceramic masonry, aerated autoclaved concrete, concrete. Mortar for manual or mechanized application in premises without high exposure to moisture. The product may be delivered in bulk, in mobile silo.

MTi-25

Plaster mortar for indoor application, manual or mechanized



Characteristics

- High adhesion
- Super-finished surface
- Easy processing
- Low consumption

Specific consumption

approx. 10-13kg/m²/cm

Packaging

Paper bags of 30kg
1 pallet = 42 bags = 1260kg
Bulk in mobile silo

MTe-35

Mortar for plastering and exterior repairs, for manual or mechanized application



Characteristics

- High adhesion
- Application up to 2,5 cm in a single layer, minimum thickness of 10mm
- Hydrophobic surface
- Low consumption

Specific consumption

approx. 13-15kg/m²/cm

Packaging

Paper bags of 30kg
1 pallet = 42 bags = 1260kg
Bulk in mobile silo

Scopes of application

Supporting or smoothing plaster mortar for indoor application on ceramic masonry, aerated autoclaved concrete, concrete. Mortar for manual or mechanized application including in premises with high moisture such as bathrooms and kitchens. According to the support absorption, it is primed or moistened appropriately. The product may be delivered in bulk, in mobile silo.

Scopes of application

Supporting or smoothing plaster mortar for manual or mechanized application on interior and exterior, including in premises with high moisture such as bathrooms and kitchens. The product may be delivered in bulk, in mobile silo.

KLASIKO

Classic plaster mortar for interior and exterior



Characteristics

- Exclusive manual application
- Easy processing
- Smooth surface
- Low preparation time
- Low consumption

Specific consumption

approx. 12-15kg/m²/cm

Packaging

Paper bags of 30kg
1 pallet = 42 bags = 1260kg

Scopes of application

Mortar for exclusive manual application on interior and exterior, for wall plastering, small repairs and retouches. According to the support absorption, it is primed or moistened appropriately.

MULTITENGO

Premix with plaster and repair additives



Characteristics

- Increased crack resistance
- Increased durability under wet and freeze conditions
- Increased adhesion and workability
- Free of lime and no required lime

Specific consumption

-

Packaging

Paper bags of 25kg
1 pallet = 48 bags = 1200kg
Paper bags of 40kg
1 pallet = 35 bags = 1400kg

Scopes of application

Gray cement-based and mineral powders mixture, intended to be used for plastering, building operations or for repairs. It is required to mix by various quantities of sand and water for the execution of economic mortars for masonry or plastering.

MT 100 SEISMO

Mortar for plastering and consolidations, applicable manually or mechanized, on interior or exterior



Characteristics

- High compressive strength
- Weatherproof
- Very good adhesion

Specific consumption

approx. 15-17kg/m²/cm

Packaging

Paper bags of 30kg
1 pallet = 42 bags = 1260kg

Scopes of application

High strength plastering mortar used on consolidation – structural rehabilitation and plastering works for exterior and interior with classic manual method or special application machine, provided by our company.

AMC-50

Cement mortar



Characteristics

- High adhesion
- Easy processing
- Application on mineral supports, aerated autoclaved concrete, brick

Specific consumption

approx. 3-5 kg /m²

Packaging

Paper bags of 30kg
1 pallet = 42 bags = 1260kg
Bulk in mobile silo

Scopes of application

Cement-based mortar for priming and execution of adhesion bridges on mineral supports, including high absorption, aerated autoclaved concrete, concrete, brick and any other such. The product may be delivered in bulk, in mobile silo.

DO NOT

PAPER BAG



SAND BUCKETFUL



PULLEY BUCKET



now can be history



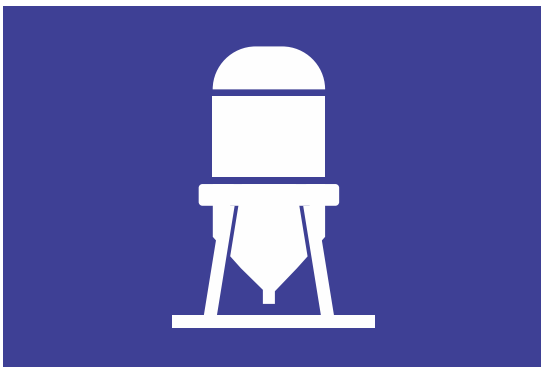
Constructors understood that it is more efficient to work with **dry mortars in silo**, that shovel work does not keep up with actual times.



SO YES

AdePlast products shall be transported and delivered directly on site by specially equipped truck, in AdePlast metallic silos.

Materials are extracted of the silo by means of pneumatic transport installations which create therein an air pressure of max. 2 bars, or by continuous stirring mixers which may be provided to the beneficiary. The silo recharge is made by cimenttruck provided with air compressor.



- Constant material quality
- Minimum storage area
- Location under moisture conditions
- Possibility of efficient transport on long distances (H=50m, L=70m)
- Environment-friendly handling conditions
- Removal of manual transport
- Applicability on all powdery products of ADEPLAST range of products

THE MOBILE SILO INCREASES BY SEVEN TIMES THE SITE PRODUCTIVITY

By the mobile silo, a constructor may control exactly the material quantity and the used recipe. The silo and the pump delivered with it, remove the use of the bucket for the material transport on the upper floors. Actually, constructors increase considerably the productivity per employee.

MAI

Anti-sealing Mortar



Characteristics

- Removal of fat efflorescences
- Better wall aeration
- Removal of osmotic water uptake by plaster
- Low consumption

Specific consumption

approx. 10-18kg/m²/cm

Packaging

Paper bags of 25kg
1 pallet = 48 bags = 1200kg

NISIP

Sand for constructions
0.1 - 1mm



Characteristics

- High adhesion
- Super finished surface
- Easy processing
- Low consumption

Specific consumption

-

Packaging

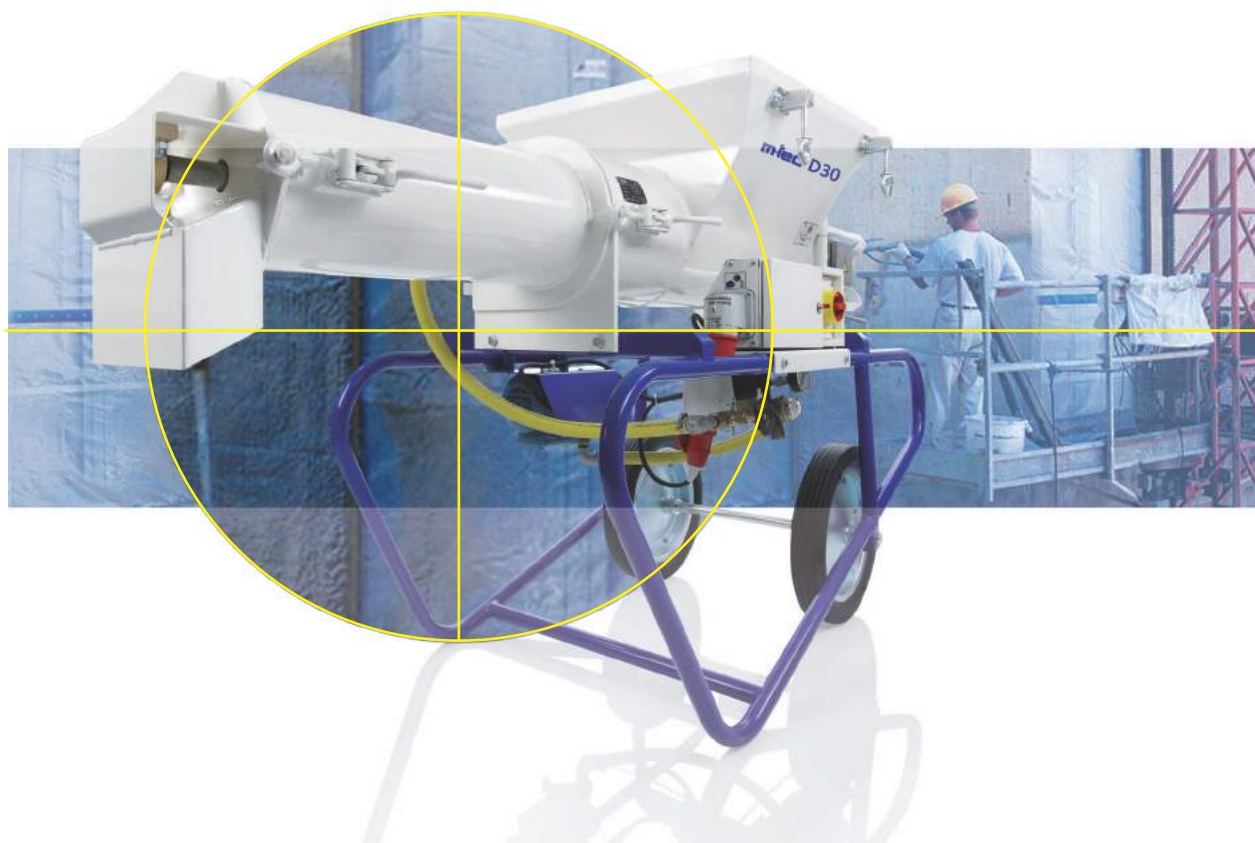
Paper bags of 25kg
1 pallet = 48 bags = 1200kg

Scopes of application

Mortar used for wall plastering for preventing the occurrence of dampness, for example in bathrooms, corridors, basements, living rooms, old houses on interior or exterior.

Scopes of application

Sand used for the preparation of plastering mortars, screeds, masonry mortars, by addition of cement and/or lime.





ADEPLAST®

Finishing
mortar

FINISHING MORTAR

MSF

Super-plaster mortar for plaster and repairs



Characteristics

- High adhesion
- Smooth surface
- Easy processing
- Low consumption

Specific consumption

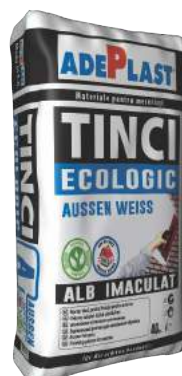
approx. 3-4kg/m²

Packaging

1200kg Paper bags of 25kg
1 pallet = 48 bags = 1200kg

TINCI ECOLOGIC AUSSEN WEISS

White finishing mortar for exterior



Characteristics

- Smooth surface
- High adhesion
- Easy processing
- Super white colour

Specific consumption

approx. 3-4kg/m²

Packaging

Paper bags of 40kg
1 pallet = 35 bags = 1400kg

Scopes of application

Mortar for finishing interior and exterior plasters before the application of slats or painting. The product may be used in high moisture premises: bathrooms, kitchens etc.

Scopes of application

Finishing mortar – it is used for the manual finishing of exterior surfaces obtaining a super white coloured finishing, waterproof and ecological layer. Due to its super white aspect, it may remain final layer.

TINCI ECOLOGIC INNEN WEISS

White coloured tinci mortar for finishing and for interior



Characteristics

- Smooth surface
- High adhesion
- Easy processing
- Super white colour

Specific consumption

approx. 3-4kg/m²

Packaging

Paper bags of 40kg
1 pallet = 35 bags = 1400kg

Scopes of application

Finishing mortar – it is used for the manual finishing of interior surfaces obtaining a super white coloured finishing, waterproof and ecological layer. Due to its super white aspect, it may remain final layer.



TINCI ALB

Super-plaster mortar for plaster and repairs



Characteristics

- Smooth surface
- High adhesion
- Easy processing
- White colour

Specific consumption

approx. 3-4kg/m²

Packaging

Paper bags of 25kg
1 pallet = 48 bags = 1200kg



Scopes of application

White Tinci for finishing interior and exterior plasters before the application of slats or painting. The product may be used in high moisture premises: bathrooms, kitchens etc



TINCI GRI

Super-plaster mortar for plaster and repairs



Characteristics

- Smooth surface
- High adhesion
- Easy processing

Specific consumption

approx. 3-4kg/m²

Packaging

Paper bags of 25kg
1 pallet = 48 bags = 1200kg

Scopes of application

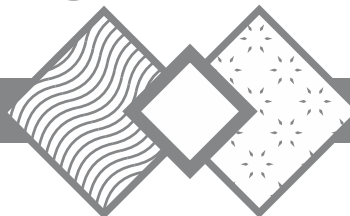
Gray tinci for finishing interior and exterior plasters before the application of slats or painting. The product may be used in high moisture premises: bathrooms, kitchens etc

ADEPLAST®



GYPSUM PLASTER FOR INTERIOR/EXTERIOR

FILLING



FINISHING

ADEPLAST®



Skims plasters
for filling
and finishing

**SKIMS PLASTERS FOR
FILLING AND FINISHING**

GLETUL MESERIAȘULUI GM-20

White gypsum plasterboard



Characteristics

- Water vapour permeable
- Stable white colour
- UV resistance

Specific consumption

approx. 0.5-1kg/m²

Packaging

Paper bags of 20kg
1 pallet = 48 bags = 960kg
Plastic bags of 5kg
1 pallet = 112 bags = 560kg

GLETUL MESERIAȘULUI GM-20 T-MAX

White gypsum plasterboard



Characteristics

- Water vapour permeable
- Stable white colour
- UV resistance

Specific consumption

approx. 0.5-1kg/m²

Packaging

Paper bags of 20kg
1 pallet = 48 bags = 960kg

Scopes of application

Finishing material for matured surfaces, free of moisture, on interior, on concrete, light concrete, cement plasters, cement lime plaster, gypsum plasterboard.

Scopes of application

Finishing material for matured surfaces, free of moisture, on interior, on concrete, light concrete, cement plasters, cement lime platers, gypsum plasterboard by means of T-MAX 405 application machine.

SGC-20

Super cement plaster



Characteristics

- Super smooth surfaces
- Shiny white colour
- High moisture resistant
- Mechanical strength over time
- UV resistance

Specific consumption

approx. 0.5-1kg/m²

Packaging

Paper bags of 20kg
1 pallet = 48 bags = 960kg

Scopes of application

Finishing material for matured surfaces, free of moisture, on interior and exterior, on concrete, light concrete, cement plasters, cement lime plaster, where there is a risk for wet ambient after application (bathroom, kitchen, premises of covered swimming pools etc.). It is used to obtain very fine and smooth surfaces.

SGI-20

Gypsum plasterboard



Characteristics

- Super smooth surfaces
- Water vapour permeable
- UV resistance

Specific consumption

approx. 0.5-1kg/m²

Packaging

Paper bags of 20kg
1 pallet = 48 bags = 960kg
Plastic bags of 5kg
1 pallet = 84 bags = 420kg

Scopes of application

Finishing material for matured surfaces, free of moisture, on interior, on concrete, light concrete, cement plasters, cement lime plaster, gypsum plasterboard. For obtaining fine surfaces before painting.

GM-126

Loading gypsum plaster with PORUS X



Characteristics

- Super smooth surfaces
- Water vapour permeable
- UV resistance

Specific consumption

approx. 0.5-1kg/m²

Packaging

Paper bags of 20kg
1 pallet = 48 bags = 960kg

Scopes of application

Finishing material as first layer for loading matured surfaces, free of moisture, on interior, on concrete, light concrete, cement plasters, cement lime plasters, gypsum plasterboard. For obtaining very smooth and fine surfaces, before painting, within PORUS X finishing system. It may be applied also mechanized.

GM-127

Glet de finisaj cu PORUS X



Characteristics

- UV resistance
- Water vapour permeable
- Stable white colour
- High moisture strength

Specific consumption

approx. 0.5-1kg/m²

Packaging

Paper bags of 20kg
1 pallet = 48 bags = 960kg

Scopes of application

Finishing material as last layer for matured surfaces, both on interior and exterior. It is recommended to be used in bathrooms, kitchens, living rooms, halls, covered terraces etc. For obtaining very smooth and fine surfaces, before painting, within PORUS X finishing system. It may be applied also mechanized.

IM-99

Modelling gypsum plaster



Characteristics

- Easy applicability
- Perfect adhesion
- Very good workability

Packaging

Paper bags of 20kg
1 pallet = 48 bags = 960kg
Plastic bags of 5kg
1 pallet = 84 bags = 420kg

Scopes of application

For works fixing the electrical installations on walls, filling some holes, small repairs of support surfaces as well as levelling, only on building interior, casting of patterns, figurines, moulds.

IC-90

Gypsum plaster for construction



Characteristics

- Easy applicability
- Perfect adhesion
- Very good workability

Packaging

Paper bags of 20kg
1 pallet = 48 bags = 960kg

Scopes of application

Finishing material for matured surfaces, free of moisture, on interior, on concrete, light concrete, cement plasters, cement lime plaster, gypsum plasterboard. For obtaining fine surfaces before painting.



The logo for ADEPLAST, featuring the word 'ADEPLAST' in a bold, sans-serif font. The 'P' is red, while the other letters are blue. A registered trademark symbol (®) is located at the end of the word. The logo is enclosed in a thin black rectangular border.

ADEPLAST®

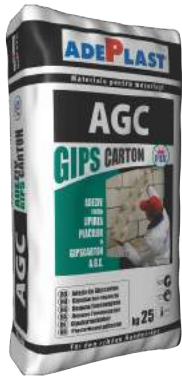


Gypsum
board system

GYPSUM BOARD SYSTEM

AGC

Adhesive for bonding gypsum board



Characteristics

- High strength
- Smooth surface
- Easy processing

Specific consumption

approx. 5kg/m²

Packaging

Paper bags of 25kg
1 pallet = 48 bags = 1200kg

KGC-50

Mortar for grouting gypsum boards



Characteristics

- High strength
- Smooth surface
- Easy processing

Specific consumption

approx. 5 -10 ml covered joint/kg

Packaging

Paper bags of 20kg
1 pallet = 48 bags = 960kg
Plastic bags of 5kg
1 pallet = 96 bags = 480kg

Scopes of application

Gypsum based mortar for application on interior for bonding gypsum boards on mineral supports such as concrete, brick, aerated autoclaved concrete, resistant plastering, cinder blocks.

Scopes of application

Gypsum based mortar for application on interior for grouting gypsum boards in combination with reinforcement tape of glass fibre or paper.

GLET FIX

Plasterboard for gypsum plasterboard



Characteristics

- High strength
- Smooth surface
- Stable white colour
- Easy processing

Specific consumption

approx. 0.5kg/m²

Packaging

Paper bags of 20kg
1 pallet = 48 bags = 960kg



Scopes of application

Gypsum based mortar for application on interior on gypsum boards. For finished surfaces at slat level, ready for painting.



ADEPLAST®

**DECORATIVE
PLASTERS**

EDELPUTZ ALB NATUR

Mineral decorative plaster



Characteristics

- Easy workability
- High adhesion
- High vapour permeable
- Weather and UV resistant
- White natur colour

Specific consumption

approx. 4-5kg/m²

Packaging

Paper bags of 25kg
1 pallet = 48 bags = 1200kg

Scopes of application

Mineral decorative plaster for application on interior or exterior for finishing mineral plasters. For finishing works of exterior or interior cement and cement-lime based mineral plasters, as well as on other mineral supports for obtaining trowel surfaces such as "stone powder", granulation up to 2.0 mm. The product is not applied on thermal systems with polystyrene, synthetic materials, paint or oil layers, paints.

EDELPUTZ ALB

Mineral decorative plaster



Characteristics

- Easy workability
- High adhesion
- High vapour permeable
- Weather and UV resistant
- White colour

Specific consumption

approx. 4-5kg/m²

Packaging

Paper bags of 25kg
1 pallet = 48 bags = 1200kg

Scopes of application

Mineral decorative plaster for application on interior or exterior for finishing mineral plasters. For finishing works of exterior or interior cement and cement-lime based mineral plasters, as well as on other mineral supports for obtaining trowel surfaces such as "stone powder", granulation up to 2.0 mm. The product is not applied on thermal systems with polystyrene, synthetic materials, paint or oil layers, paints.



EDELPUTZ TERMO

Mineral decorative plaster



Characteristics

- Easy workability
- High adhesion
- High vapour permeable
- Weather and UV resistant
- White colour

Specific consumption

approx. 4-5kg/m²

Packaging

Paper bags of 25kg
1 pallet = 48 bags = 1200kg

Scopes of application

Mineral decorative plaster for application on interior or exterior for finishing mineral plasters and thermal systems applied on buildings up to maximum 4 floor height. For finishing works of exterior or interior cement and cement-lime based mineral plasters, as well as on other mineral supports for obtaining trowel surfaces with granulation up to 2.0 mm. The product is not applied on synthetic materials, paint or oil layers, paints.



ADEPLAST®

**CONCRETE
FOR TORCRETING**

TORCRET J2/C 25 30/4

Concrete for torcreting



Characteristics

- High density of applied concrete
- Freeze/thaw resistant
- Low ricochet
- Minimum compression resistance of 25N/mm²

Specific consumption

approx.2500 kg / m³ realized concrete considering 25% ricochet

Packaging

Paper bags of 30kg
1 pallet = 42 bags = 1260kg

Scopes of application

Industrially manufactured dry material for applying concrete by spraying/torcreting, for the structure repair and reinforcement, for the consolidation and reinforcement of land and mountainsides, for application in tunnels, mining exploitations, old or new buildings, execution of swimming pools and other such, on interior and exterior.



TORCRET J2/C 16 20/4

Concrete for torcreting



Characteristics

- High density of applied concrete
- Freeze/thaw resistant
- Low ricochet
- Minimum compression resistance of 16N/mm²

Specific consumption

approx.2500 kg / m³ realized concrete considering 25% ricochet

Packaging

Paper bags of 30kg
1 pallet = 42 bags = 1260kg

Scopes of application

Industrially manufactured dry material for applying concrete by spraying/torcreting, for the structure repair and reinforcement, for the consolidation and reinforcement of land and mountainsides, for application in tunnels, mining exploitations, old or new buildings, execution of swimming pools and other such, on interior and exterior.

TORCRET J2/C 20 25/4

Concrete for torcreting



Characteristics

- High density of applied concrete
- Freeze/thaw resistant
- Low ricochet
- Minimum compression resistance of 20N/mm²

Specific consumption

approx.2500 kg / m³ realized concrete considering 25% ricochet

Packaging

Paper bags of 30kg
1 pallet = 42 bags = 1260kg

Scopes of application

Industrially manufactured dry material for applying concrete by spraying/torcreting, for the structure repair and reinforcement, for the consolidation and reinforcement of land and mountainsides, for application in tunnels, mining exploitations, old or new buildings, execution of swimming pools and other such, on interior and exterior.



ADEPLAST®

REPAIR AND RESTORATION MORTARS

SPRITZ NHL

Special order



Mortar spritz – hydraulic lime

Characteristics

- High water vapour permeable
- Optimal adhesion
- Equal the support absorption

Specific consumption

approx. 5 kg/m²

Packaging

Paper bags of 30kg
1 pallet = 42 bags = 1260kg

Scopes of application

Mortar spritz following a historic recipe, based on natural hydraulic lime NHL5, for application on massive masonry of brick, mixed brick stone or crushed rock on old or new buildings. Special product within restoration activities on historical buildings, churches, historical monuments.



RENOWA SOCLU NHL

Special order



Plaster mortar for draining

Characteristics

- High water vapour permeable
- Optimal adhesion
- Stree-free stiffening

Specific consumption

approx. 15 kg/m²/cm

Packaging

Paper bags of 30kg
1 pallet = 42 bags = 1260kg

Scopes of application

Plaster mortar following a historic recipe, with macro-pores, based on natural hydraulic lime NHL5, for application on massive masonry of brick, mixed brick stone or crushed rock on old or new buildings. Special product within restoration activities on historical buildings, churches, historical monuments, at the base on areas averagely affected by salts and humidity of historical buildings, churches, historical monuments.

RENOWA PLASTER NHL

Special order



Plaster – hydraulic lime

Characteristics

- High water vapour permeable
- Optimal adhesion
- Stree-free stiffening

Specific consumption

approx. 15 kg/m²/cm

Packaging

Paper bags of 30kg
1 pallet = 42 bags = 1260kg

Scopes of application

Plaster mortar following a historic recipe, based on natural hydraulic lime NHL5, for application on massive masonry of brick, mixed brick stone or crushed rock on old or new buildings. Special product within restoration activities on historical buildings, churches, historical monuments.



RENOWA TINCI NHL

Tinci mortar – hydraulic lime

Special order



Characteristics

- Optimal adhesion
- High water vapour permeable
- Stree-free stiffening
- No hygrophobic

Specific consumption

approx. 5 kg/m²

Packaging

Paper bags of 30kg
1 pallet = 42 bags = 1260kg

Scopes of application

Tinci mortar following a historic recipe, based on natural hydraulic lime NHL5, for application on plasters based on hydraulic lime.

RENOWA KALKFINISH

Mortar based on lime

Special order



Characteristics

- Low stresses in the material layer
- High adhesion
- Compatible to historical plasters based on lime

Specific consumption

approx. 1,5 kg/m²/mm

Packaging

Paper bags of 25kg
1 pallet = 48 bags = 1200kg

Scopes of application

Universal mortar based on lime, hydrophobic, high vapour permeable and adhesion on almost usual supports in constructions. For works of façade reconsolidation, historical or modern buildings. It may be used as adhesion points on concrete with wet on wet application on a combed layer.

RENOWA KALKPUTZ

Lime-based plaster (with fibre)

Special order



Characteristics

- High water vapour permeable
- Optimal adhesion
- Stree-free stiffening

Specific consumption

approx. 14 kg/m²/cm

Packaging

Paper bags of 25kg
1 pallet = 48 bags = 1260kg

Scopes of application

Lime-based plaster, with low hydrophobic, high permeability and adhesion on almost mineral non hydrophobic supports. For works of façade reconsolidation, historical or modern buildings.

ADEPLAST®



ADEPLAST®

**POLYSTYRENE
FOR FACADE**



EPS 100

Heat insulating boards made of expanded polystyrene granules for buildings

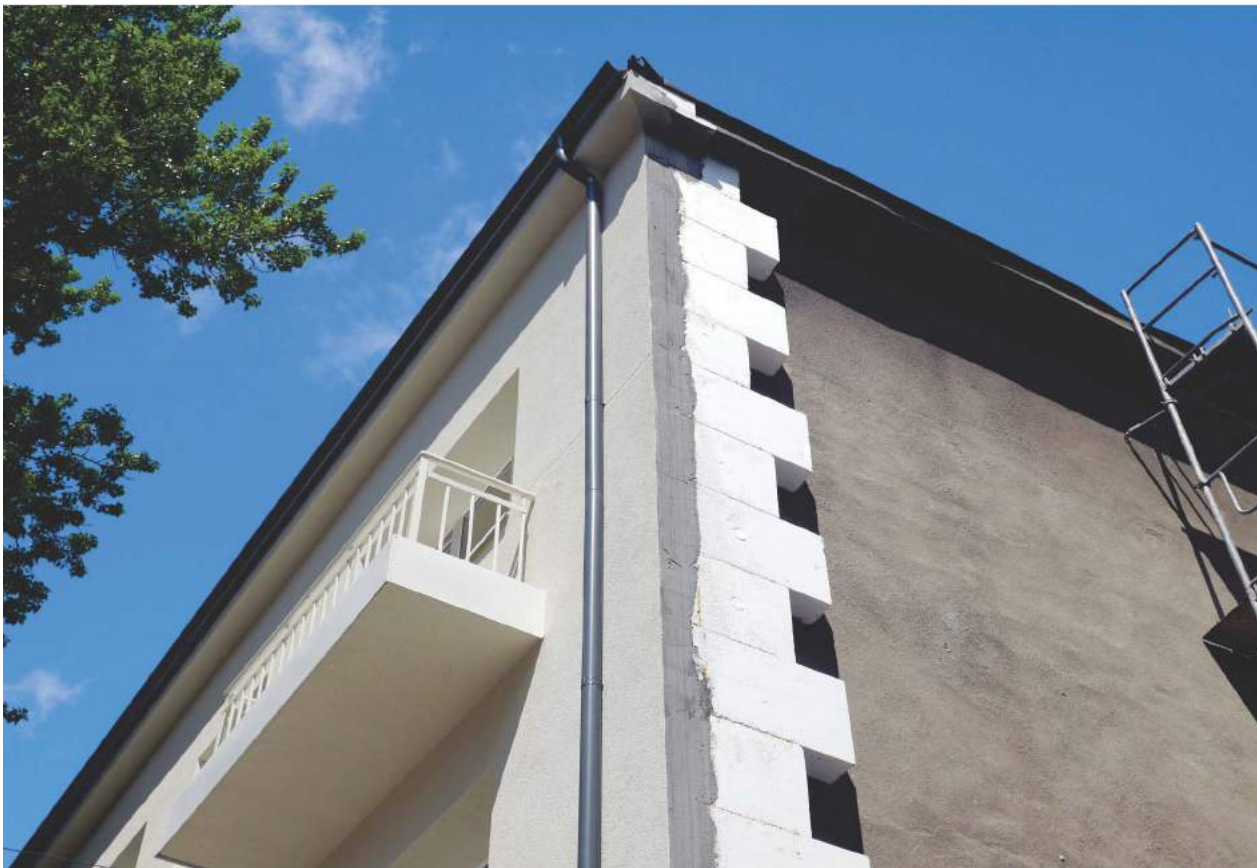


Scopes of application

Heat insulation boards of expanded polystyrene granules for buildings made of fireproof raw material of ADEPLAST range. EPS 100 are used under the form of thermal insulation panels for: facades of ETICS system (thermal insulation systems on the exterior of civil and industrial buildings), roofs, suspended ceilings, underground walls

Warning: During storage and commissioning, the boards should not be exposed to sunlight, high heat or open fire.

Thermal resistance (m ² K/W)	Characteristics
0,56 for a thickness of 20mm	Thermal insulation Sound insulation Efficiency
1,39 for a thickness of 50mm	
2,78 for a thickness of 100mm	Diffusion Resistance of water vapours - μ
4,17 for a thickness of 150mm	30-70
5,56 for a thickness of 200mm	Thickness (mm)
	+/- 1
Bending strength (kPa)	Shear strength-τ (kPa)
BS≥150	≥75
Thermal conductivity (W/Mk)	Fire reaction
0.036	E
Water vapour permeability (mg/(Pa.h.m))	Compressive stress at 10% strain (kPa)
0,009-0,020	CS≥100
Length (mm)	Width (mm)
1000 +/- 2	500 +/- 2



EPS 80+

Heat insulating boards made of expanded polystyrene granules for buildings



Scopes of application

Heat insulation boards of expanded polystyrene granules for buildings made of fireproof raw material of ADEPLAST range. EPS 80+ are used under the form of thermal insulation panels for: facades of ETICS system (thermal insulation systems on the exterior of civil and industrial buildings), roofs, suspended ceilings, underground walls.

Warning: During storage and commissioning, the boards should not be exposed to sunlight, high heat or open fire.

Thermal resistance (m ² K/W)	Characteristics
0,53 for a thickness of 20mm	Thermal insulation Sound insulation Efficiency
1,32 for a thickness of 50mm	Diffusion Resistance of water vapours - μ
2,63 for a thickness of 100mm	
3,95 for a thickness of 150mm	20-40
5,26 for a thickness of 200mm	Thickness (mm)
	+/- 1
Bending strength (kPa)	Shear strength-τ (kPa)
BS≥150	≥75
Thermal conductivity (W/Mk)	Fire reaction
0.038	E
Water vapour permeability (mg/(Pa.h.m))	Compressive stress at 10% strain (kPa)
0,015-0,030	CS≥80
Length (mm)	Width (mm)
1000 +/- 2	500 +/- 1



EPS 80 GRAPHITE

Heat insulating boards made of expanded polystyrene granules for buildings



Scopes of application

Heat insulation boards of expanded polystyrene granules for buildings made of fireproof raw material of ADEPLAST range. EPS 80 GRAPHITE are used under the form of thermal insulation panels for: ventilated facades, facades of ETICS system (thermal insulation systems on the exterior of buildings).

Warning: During storage and commissioning, the boards should not be exposed to sunlight, high heat or open fire.

Thermal resistance (m ² K/W)	Characteristics
0,63 for a thickness of 20mm	Thermal insulation Sound insulation Efficiency
1,56 for a thickness of 50mm	
3,13 for a thickness of 100mm	Diffusion Resistance of water vapours - μ
4,69 for a thickness of 150mm	20-40
6,25 for a thickness of 200mm	Thickness (mm)
	+/- 1
Bending strength (kPa)	Shear strength-τ (kPa)
BS≥150	≥75
Thermal conductivity (W/Mk)	Fire reaction
0.032	E
Water vapour permeability (mg/(Pa.h.m))	Compressive stress at 10% strain (kPa)
0,015-0,030	CS≥80
Length (mm)	Width (mm)
1000 +/- 2	500 +/- 2

ADEPLAST®

Polystyrene
for interior/roof



**POLYSTYRENE
FOR INTERIOR/ROOF**



EPS 50

Heat insulating boards made of expanded polystyrene granules for buildings



Scopes of application

Heat insulation boards of expanded polystyrene granules for buildings made of fireproof raw material of ADEPLAST range. EPS 50 for premises without particular static loading, insulation of free premises, insulation inside buildings and intrados of ceilings, filling material in wood industry and other such. Warning: During storage and commissioning, the boards should not be exposed to sunlight, high heat or open fire.

Warning: During storage and commissioning, the boards should not be exposed to sunlight, high heat or open fire.

Thermal resistance (m²K/W)	Characteristics
0,50 for a thickness of 20mm	Thermal insulation Sound insulation Efficiency
1,25 for a thickness of 50mm	Diffusion Resistance of water vapours - μ
2,50 for a thickness of 100mm	20-40
3,75 for a thickness of 150mm	Thickness (mm)
5,00 for a thickness of 200mm	+/- 2
Bending strength (kPa)	Shear strength-τ (kPa)
BS≥75	≥35
Thermal conductivity (W/Mk)	Fire reaction
0.040	E
Water vapour permeability (mg/(Pa.h.m))	Compressive stress at 10% strain (kPa)
0,015-0,030	CS≥50
Length (mm)	Width (mm)
1000 +/- 3	500 +/- 3



EPS 60

Heat insulating boards made of expanded polystyrene granules for buildings



Scopes of application

Heat insulation boards of expanded polystyrene granules for buildings made of fireproof raw material of ADEPLAST range. EPS 70 are used under the form of thermo insulation panels for: ventilated facades and facades of ETICS system (thermal insulation systems on the exterior of buildings).

Warning: During storage and commissioning, the boards should not be exposed to sunlight, high heat or open fire.

Thermal resistance (m²K/W)	Characteristics
0,50 for a thickness of 20mm	Thermal insulation Sound insulation Efficiency
1,25 for a thickness of 50mm	Diffusion Resistance of water vapours - μ
2,50 for a thickness of 100mm	
3,75 for a thickness of 150mm	20-40
5,00 for a thickness of 200mm	Thickness (mm)
	+/- 2
Bending strength (kPa)	Shear strength-τ (kPa)
BS≥100	≥50
Thermal conductivity (W/Mk)	Fire reaction
0,040	E
Water vapour permeability (mg/(Pa.h.m))	Compressive stress at 10% strain (kPa)
0,015-0,030	CS≥60
Length (mm)	Width (mm)
1000 +/- 3	500 +/- 3



EPS 70

Heat insulating boards made of expanded polystyrene granules for buildings



Scopes of application

Heat insulation boards of expanded polystyrene granules for buildings made of fireproof raw material of ADEPLAST range. EPS 70 are used under the form of thermo insulation panels for: ventilated facades and facades of ETICS system (thermal insulation systems on the exterior of buildings).

Warning: During storage and commissioning, the boards should not be exposed to sunlight, high heat or open fire.

Thermal resistance (m²K/W)	Characteristics
0,51 for a thickness of 20mm	Izolare termică Izolare fonică Eficiență
1,28 for a thickness of 50mm	Diffusion Resistance of water vapours - μ
2,56 for a thickness of 100mm	
3,85 for a thickness of 150mm	20-40
5,13 for a thickness of 200mm	Thickness (mm)
	+/- 1
Bending strength (kPa)	Shear strength-τ (kPa)
BS≥115	≥50
Thermal conductivity (W/Mk)	Fire reaction
0.039	E
Water vapour permeability (mg/(Pa.h.m))	Compressive stress at 10% strain (kPa)
0,015-0,030	CS≥70
Length (mm)	Width (mm)
1000 +/- 2	500 +/- 1



ADEPLAST®

Polystyren
for terraces

**POLYSTYRENE
FOR TERRACES**



EPS 120

Heat insulating boards made of expanded polystyrene granules for buildings



Scopes of application

Heat insulation boards of expanded polystyrene granules for buildings made of fireproof raw material of ADEPLAST range. EPS 150 are used under the form of thermo insulation panels for: premises with high static loading, high traffic terraces; traffic terraces, under average traffic terraces.

Warning: During storage and commissioning, the boards should not be exposed to sunlight, high heat or open fire.

Thermal resistance (m ² K/W)	Characteristics
0,59 for a thickness of 20mm	Thermal insulation Sound insulation Efficiency
1,47 for a thickness of 50mm	
2,94 for a thickness of 100mm	Diffusion Resistance of water vapours - μ
4,71 for a thickness of 150mm	30-70
5,88 for a thickness of 200mm	Thickness (mm)
	+/- 1
Bending strength (kPa)	Shear strength-τ (kPa)
BS≥200	≥75
Thermal conductivity (W/Mk)	Fire reaction
0.034	E
Water vapour permeability (mg/(Pa.h.m))	Compressive stress at 10% strain (kPa)
0,009-0,020	CS≥120
Length (mm)	Width (mm)
1000 +/- 1	500 +/- 1



EPS 150

Heat insulating boards made of expanded polystyrene granules for buildings



Scopes of application

Plăci termoizolante din granule de polistiren expandat pentru clădiri, fabricate din materie primă ignifugată din gama ADEPLAST EPS 150 se folosesc sub forma panourilor termoizolante pentru: spații cu încărcare statică ridicată; terase circulabile, sub pardoseli cu trafic mediu.

Warning: During storage and commissioning, the boards should not be exposed to sunlight, high heat or open fire.

Thermal resistance (m²K/W)	Characteristics
0,61 for a thickness of 20mm	Thermal insulation Sound insulation Efficiency
1,52 for a thickness of 50mm	Diffusion Resistance of water vapours - μ
3,03 for a thickness of 100mm	
4,55 for a thickness of 150mm	-
6,06 for a thickness of 200mm	Thickness (mm) +/- 1
Bending strength (kPa)	Shear strength-τ (kPa)
BS≥250	-
Thermal conductivity (W/Mk)	Fire reaction
0.033	E
Water vapour permeability (mg/(Pa.h.m))	Compressive stress at 10% strain (kPa)
0,009-0,020	CS≥150
Length (mm)	Width (mm)
1000 +/- 2	500 +/- 2



EPS 200

Heat insulating boards made of expanded polystyrene granules for buildings



Scopes of application

Heat insulation boards of expanded polystyrene granules for buildings made of fireproof raw material of ADEPLAST range. EPS 200 are used under the form of thermo insulation panels for: premises with very high static loading, traffic terraces, under floors with medium and heavy traffic, floor of refrigerating rooms.

Warning: During storage and commissioning, the boards should not be exposed to sunlight, high heat or open fire.

Thermal resistance (m ² K/W)	Characteristics
0,63 for a thickness of 20mm	Thermal insulation Sound insulation Efficiency
1,56 for a thickness of 50mm	Diffusion Resistance of water vapours - μ
3,13 for a thickness of 100mm	
4,69 for a thickness of 150mm	-
6,25 for a thickness of 200mm	Thickness (mm)
	+/- 1
Bending strength (kPa)	Shear strength-τ (kPa)
BS≥250	-
Thermal conductivity (W/Mk)	Fire reaction
0.032	E
Water vapour permeability (mg/(Pa.h.m))	Compressive stress at 10% strain (kPa)
0,006-0,015	CS≥200
Length (mm)	Width (mm)
1000 +/- 2	500 +/- 2

ADEPLAST®



Premium
thermal systems

**PREMIUM
THERMAL SYSTEMS**



TERMOPREMIUM

polystyren EPS80+



POLISTIROL PREMIUM

Adhesive and plasterboard for polystyrene heat insulation boards



EPS 80+

Heat insulation boards of expanded polystyrene granules for buildings



DOWELS

Dowels for fixing the thermal insulation



GLASS FIBRE NET

AdePlast glass fibre net of 145/160 g/m²



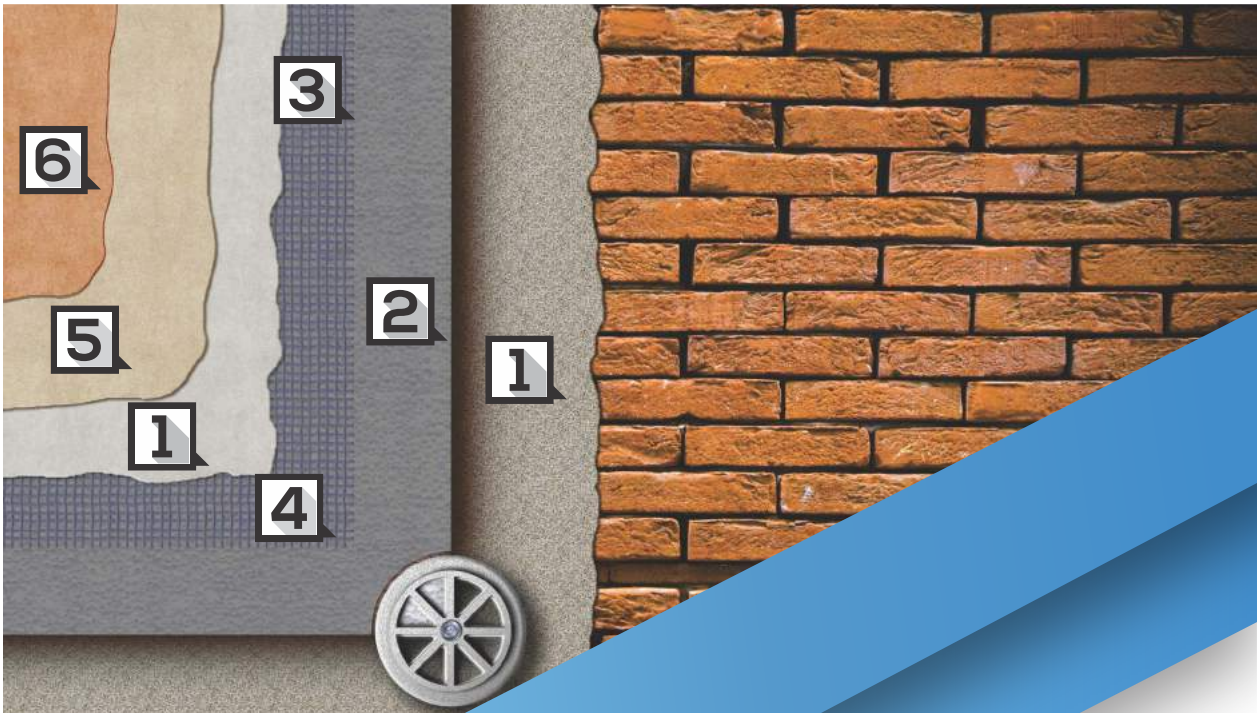
ADEPLAST PRIMER

Primer for decorative plasters



AERIA PLAST WITH PORUS X

Structured decorative plaster



TERMOGRAFIT

graphite polystyren EPS80



POLISTIROL PREMIUM

Adhesive and plasterboard for polystyrene heat insulation boards



EPS 80 GRAPHITE

Heat insulation boards of expanded polystyrene granules for buildings



DOWELS

Dowels for fixing the thermal insulation



GLASS FIBRE NET

AdePlast glass fibre net of 145/160 g/m²



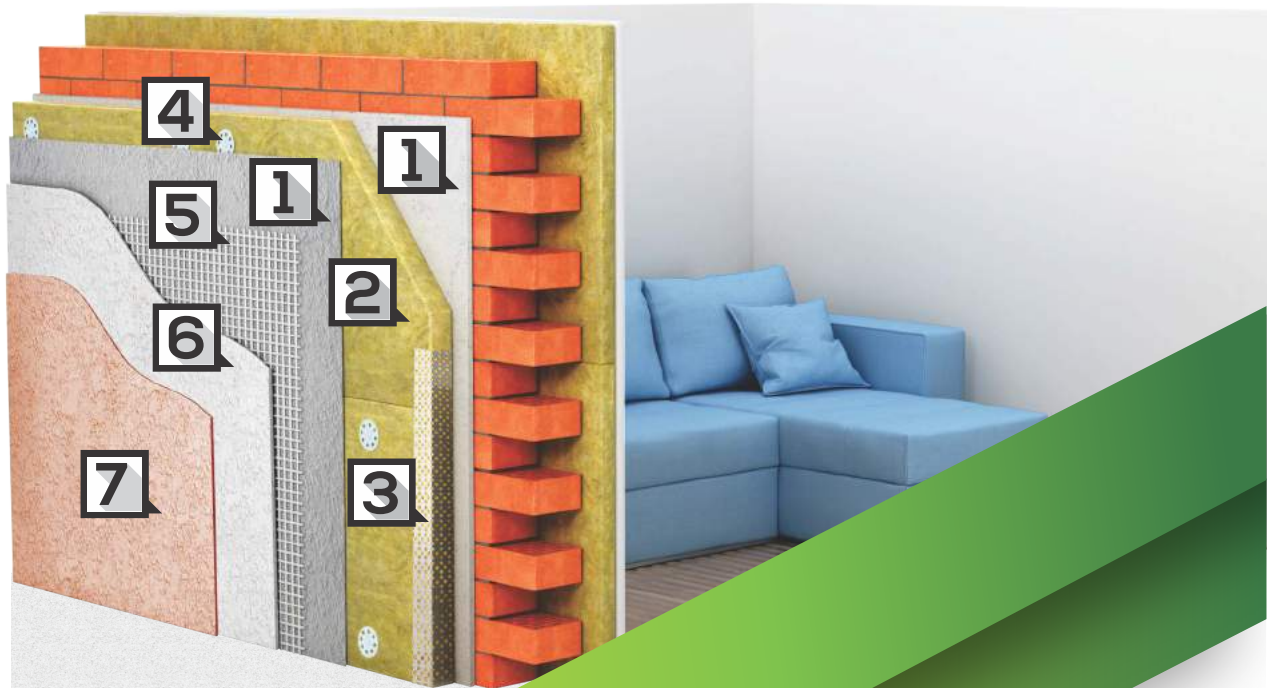
ADEPLAST PRIMER

Primer for decorative plasters



AERIA PLAST WITH PORUS X

Structured decorative plaster



TERMOBAZALT
Basalt mineral wool

- 1** LAROO MINERALWOOL KLEBER
Adhesive for mineral wool boards
- 2** LAROO MINERAL WOOL BOARDS
Basalt mineral wool boards
- 3** CORNER MESH

- 4** DOWELS
Dowels for fixing the thermal insulation

- 5** GLASS FIBRE NET
AdePlast glass fibre net of 145/160 g/m²

- 6** ADEPLAST PRIMER
Primer for decorative plasters

- 7** AERIA PLAST WITH PORUS X
Structured decorative plaster

ADEPLAST®



INTERIOR PAINTS

AERIA SUPERWEISS

Super white interior paint



- Easy application
- High washability
- Super coating strength

Mode of application



Specific consumption

approx. 12m²/l/layer

Volume



Colors

Super white degree.

AERIA CU PORUS X

Washable paint for interior



- High hydrophobicity
- High washability
- Shades of bright colour

Mode of application



Specific consumption

approx. 10m²/l/layer

Volume



Colors

Coloured according to color fashion palette or in prepared bases of colouration.

AERIA ANTIBACTERII

Paint for interior with antibacterial effect



Special Order

- Prevents the development of microorganisms on the applied surface
- Easy application
- Super white degree

Mode of application



Specific consumption

approx. 12m²/l/layer

Volume



Colors

Super white degree.

AERIA SILIKAT

Vopsea lavabilă silicatică pentru interior



Special Order



- High water vapour permeable
- Mineral texture
- Prevents the occurrence and development of microorganisms

Mode of application



Specific consumption

approx. 9m²/l/layer

Volume



Colors

White or pastel coloured.

*Disclaimer special order – For finding out the delivery terms and the minimum orders, please contact our sales consultant.

AERIA GOLD

All-inclusive paint for interior

It is a water soluble product formulated with latex-type polymers and appropriate specific materials for a lasting professional finishing.

Mode of application



Volume



Specific consumption

approx. 12m²/l/layer

Colors

White or it may be shaded in pale colours, according to AdePlast Color Fashion palette.





**AERIA
SUPERWEISS
ANTI-MUCEGAI**

Super washable anti-
mold paint for interior

Special
order



- High washability
- Prevents the occurrence of mold
- Very good coating
- Moisture resistance

Mode of application



Specific consumption

approx. 12m²/l/layer

Volume



Colors

White



ADEPLAST®

MISTER WEISS

We treat walls respectfully!



Mister Weiss
TRATAM PEREȚII CU RESPECT!

Vopsea lavabilă interior

- ✓ Un grad de alb excelent
- ✓ Putere de acoperire mare
- ✓ Randament sporit

15l ^{+1.5%}
180m²/strat

It covers the surface imperfections

It is applied very easily

It has a high yield

It is economic

MISTER WEISS

White washable paint for interior



- High degree of white
- Very good quality-price ratio
- Easy application

Mode of application **Specific consumption**



approx. 10m²/l/layer

Volume **Colors**



White or coloured with paste before application / Sauber Color Mix

VOPSEAU MESERIASULUI MATTLEX

Washable paint for interior



- Elasticity
- Very good coating
- Fine film

Mode of application **Specific consumption**



approx. 10m²/l/layer

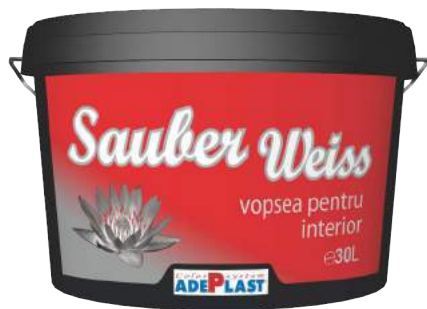
Volume **Colors**



White or coloured with paste before application / Sauber Color Mix

SAUBER WEISS

Paint for interior



- Economic paint
- Easy application
- Good yield

Mode of application **Specific consumption**



approx. 8m²/l/layer

Volume **Colors**



White or coloured with paste before application / Sauber Color Mix

PROJECT PAINT

Professional white washable paint for interior



- High degree of white
- Very good coating
- Application with high productivity

Mode of application **Specific consumption**



approx. 10m²/l/layer

Volume **Colors**



White

**SILBER
EINE HAND**

White washable
paint for interior



- High degree of white
- Very good coating
- Excellent yield

Mode of application



Specific consumption

approx. 10m²/l/layer

Volume



Colors

White



**SILBER
B & B**

Washable paint for
bathroom and kitchen



- Easy application
- Adequate for rooms with high and constant moisture
- Very good yield

Mode of application



Specific consumption

approx. 10m²/l/layer

Volume



Colors

White

SAUBER COLOR MIX

Superconcentrate pigment
for interior and exterior
paints



- Finely dispersed
- Perfectly homogeneous
- Free of VOC

Mode of application

It is used for colouring
AdePlast paints and
plasters

Specific consumption

Consumption: according to the
intensity of the desired shade
1,2,3 dye tube on the selected
package

Volume



Colors

Greenish yellow, Yellow,
Golden yellow, Oxid Yellow,
Peach, Orange, Red,
Magenta, Brick, Oxid Red,
Beige, Brown, Yellow green,
Green, Olive Green,
Turquoise, Blue, Marine blue,
Purple, Black



ADEPLAST®

Exterior
paints



EXTERIOR PAINTS

AERIA NANO-TEK

by **ADEPLAST**[®]

HEAT INSULATING PAINT WITH NANO PARTICLES



- ✓ Conserves thermal energy
- ✓ Thermal insulating properties (blocks the heat transfer)
- ✓ High resistance at wet friction
- ✓ Removes the condensation and controls the development of mold spores

- ✓ Excellent opacity
- ✓ Reflects solar radiation
- ✓ Barrier against moisture
- ✓ Very high vapour permeability
- ✓ UV and bad weather resistant

ADEPLAST[®]

CONSTRUCTION MATERIALS



AERIA CU PORUS X

Washable paint for exterior



- High degree of lavability
- Shades of bright colour
- High hidrophobicity

Mode of application



Specific consumption

approx. 10m²/l/layer

Volume



Colors

Coloured according to colour fashion palette or in prepared bases of colouration.

MISTER FAÇADE

Washable paint for exterior



- High adhesion on support,
- Wear, solar radiation and moisture resistance,
- Very good lavability

Mode of application



Specific consumption

approx. 10m²/l/layer

Volume



Colors



SAUBER WEISS

Paint for exterior



- Economic
- Easy application
- Good yield

Mode of application



Specific consumption

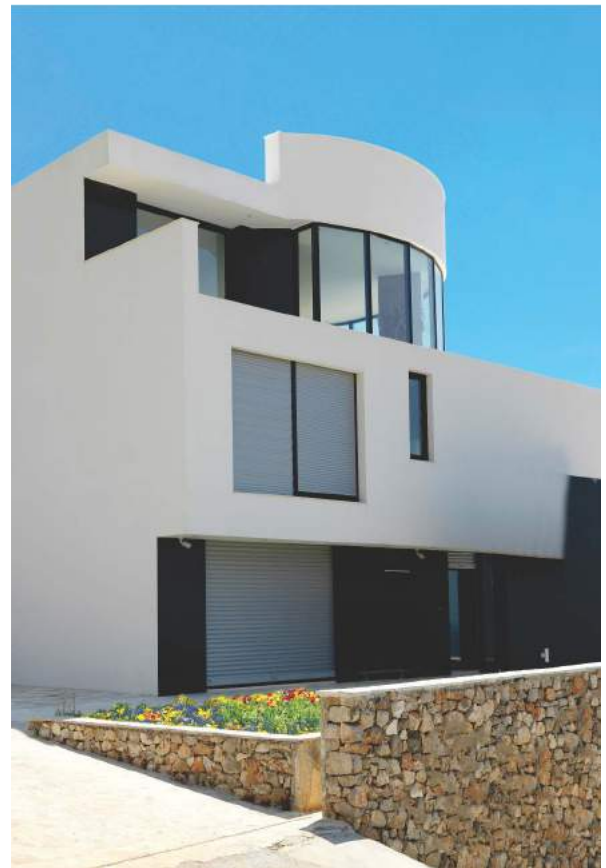
approx. 8m²/l/layer

Volume



Colors

White or coloured with paste before application / Sauber Color Mix



RENOWA SILIKAT E

Silicate paint for interior-exterior



- High vapour permeable
- Dirt resistance
- Mineral texture

Mode of application



Specific consumption

approx. 8m²/l/layer

Volume



Colors

Albă sau colorată în culori pastelate, conform paletarului AdePlast Color Fashion.

KALKFARBE 15MC

Lime based washable paint for interior-exterior



- High vapour permeable
- Dirt resistance
- Easy application

Mode of application



Specific consumption

approx. 3.5m²/l/layer

Volume



Colors

White or coloured in pastel Colors, according to AdePlast Color Fashion palette.

ADEPLAST®

Decorative
plasters

**DECORATIVE
PLASTERS**

AERIA PLAST SILIKAT

Decorative silicate plaster



- High vapour permeable
- Shades of stable colour
- Coverage of surface imperfections

Mode of application



Specific consumption

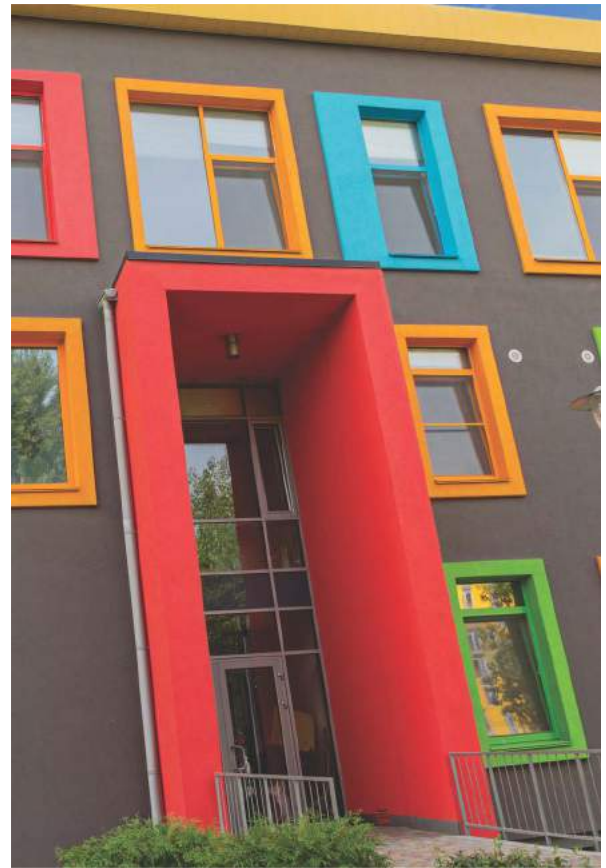
approx.2,5kg/m², 1,5mm(trowel)
approx.2,8kg/m², 2mm(scratched)

Volume



Colors

White or coloured in pastel
Colors, according to
AdePlast Color Fashion
palette.



AERIA PLAST SILICONICĂ

Decorative silicone plaster



- Waterproofing
- Durable colours
- Well defined structure

Mode of application



Specific consumption

approx.2,5kg/m²,
1,5mm(trowel)
approx.2,8kg/m²,
2mm(scratched)

Volume



Colors

It may be applied white or
shaded in pale colours
according to AdePlast Color
Fashion palette

AERIA PLAST CU PORUS X

Decorative structured plaster



- Weather resistant, scratch resistant,
- impact proof
- Durable colours

Mode of application



Specific consumption

approx.2,5kg/m²,
1,5mm(trowel)
approx.2,8kg/m²,
2mm(scratched)

Volume



Colors

White or coloured in pastel
Colors, according to
AdePlast Color Fashion
palette.

**SAUBER DEKOR
READY-MIX**

Decorative silicone plaster – Earth colours range



**25
Kg**

- Waterproofing
- Durable colours
- Tree bark surface structure

Mode of application



Specific consumption

approx. 2,8kg/m², 2mm scratched

Volume



Colors

Earth colours: Sunken Earth, Gold sand, Granite, Clay, Red brick and Terracotta

*Earth
Colors*



SAUBER DEKOR

Decorative silicone plaster



**28
Kg**



- Application with high productivity
- Shade of stable colour
- Coverage of surface imperfection

Mode of application



Specific consumption

approx. 2,5kg/m², 1,5mm (trowel)
approx. 2,8kg/m², 2mm (scratched)

Volume



Colors

White or coloured according to AdePlast Color Fashion palette.

MOZAICPLAST

Decorative plaster for socket



- High surface resistance
- Over 700 colour combination
- Weather resistance

Mode of application

Specific consumption



approx. 4.5kg/m²

Volume

Colors



Over 700 colour combination, according to Adeplast Mosaic plaster for socket catalogue.

SINGLETON



RRRR

SINGLETON MIX



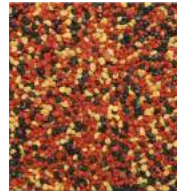
RRRY

DOUBLETON



YYRR

DOUBLETON MIX



RRYS

ALL MIX



YRKE



MOZAIC PLASTER



=



+



ADEPLAST®

Water based
primers and
lasers for wood



**WATER-BASED PRIMERS
AND LASERS FOR WOOD**



SAUBER AQUA LASUR

Satin water-based glaze for interior and exterior



- Colour and emphasize wood fibre
- Easy application
- Durable colours

Mode of application	Specific consumption
---------------------	----------------------



approx. 10m²/l/layer

Volume	Colors
--------	--------



Cherry, mahogany, rose, oak etc

AERIA AQUA HOLZ LASUR

Water-based glossy lacquer for interior and exterior



- Water-repellent
- Fast drying
- UV resistance

Mode of application	Specific consumption
---------------------	----------------------



approx. 10m²/l/layer

Volume	Colors
--------	--------



Cherry, light pinum, rosewood, chestnut, walnut, golden oak, rose, wenge, mahogany, colourless.

SILBER AQUA HOLZ PRIMER

Colourless primer for wood protection, for interior and exterior



- Easy application
- Reduces subsequent application of lacquer
- Low consumption

Mode of application	Specific consumption
---------------------	----------------------



approx. 12m²/l/layer

Volume	Colors
--------	--------



Colourless



ADEPLAST®

Impregnants,
primers,
plasters

IMPREGNANTS, PRIMERS, PLASTERS

AERIA GRUND SILIKAT

Primer for decorative silicate plasters

Special Order



- High adhesion
- High vapour permeable
- Easy application

Mode of application



Specific consumption

approx. 0,35kg/m²

Volume



Colors

Shade corresponding to the decorative plaster

ADEPLAST PRIMER

Primer for decorative plasters



- High adhesion
- Easy processing
- Fast drying

Mode of application



Specific consumption

approx. 4kg/m²

Volume



Colors

Shade corresponding to the decorative plaster

ADEPLAST GRUNDSTOP

Primer for very absorbant surfaces, AAC

Special Order



- Easy processing both on interior and exterior
- High impregnation

Mode of application



Specific consumption

approx. 0,1 kg/m² (non diluted)

Volume



Colors

Yellow

SILBER GRUND WEISS

White primer for uniformity



- White
- Reduces the paint consumption
- High adhesion

Mode of application



Specific consumption

approx. 10m²/l/layer

Volume



Colors

White

AMORSA MESERIAȘULUI

Wall primer for washable paints



- Easy processing
- Fast drying
- High adhesion

Mode of application



Specific consumption

approx. 20m²/l/layer

Volume



Colors

Colourless

RENOWA SILIKAT A

Silica Primer

Special Order



- High water vapour permeable
- Strengthens the backing
- Equals the absorption of mineral substratum

Mode of application



Specific consumption

approx. 10m²/l/layer

Volume



Colors

Colourless



PROJEKT AMORSĂ

White professional primer



- White
- Reduces the paint consumption
- High adhesion

Mode of application



Specific consumption

approx. 10m²/l/layer

Volume



Colors

White



RENOWA GRUND

Impregnation/
waterproofing primer



Special Order

- High impregnation
- Easy application
- Very good adhesion
- Used in RENOWA drainage plaster system

Mode of application



Specific consumption

approx. 10m²/l/layer

Volume



Colors

Colourless

ACRYLIC PRIMER FOR SELF-LEVELLING



Special Order

- High impregnation
- Easy application
- Very good adhesion

Mode of application



Specific consumption

approx. 10m²/l/layer

Volume



Colors

Colourless

SAUBER AMORSĂ

Concentrated
primer for wall



READY TO USE

- High impregnation
- Easy application
- Very good adhesion

Mode of application



Specific consumption

approx. 10m²/l/layer

Volume



Colors

Colourless

AERIA AMORSĂ

Concentrated
primer for wall



DILUTION FACTOR 1:2 - 1:4

- High adhesion
- Easy processing
- Fast drying

Mode of application



Specific consumption

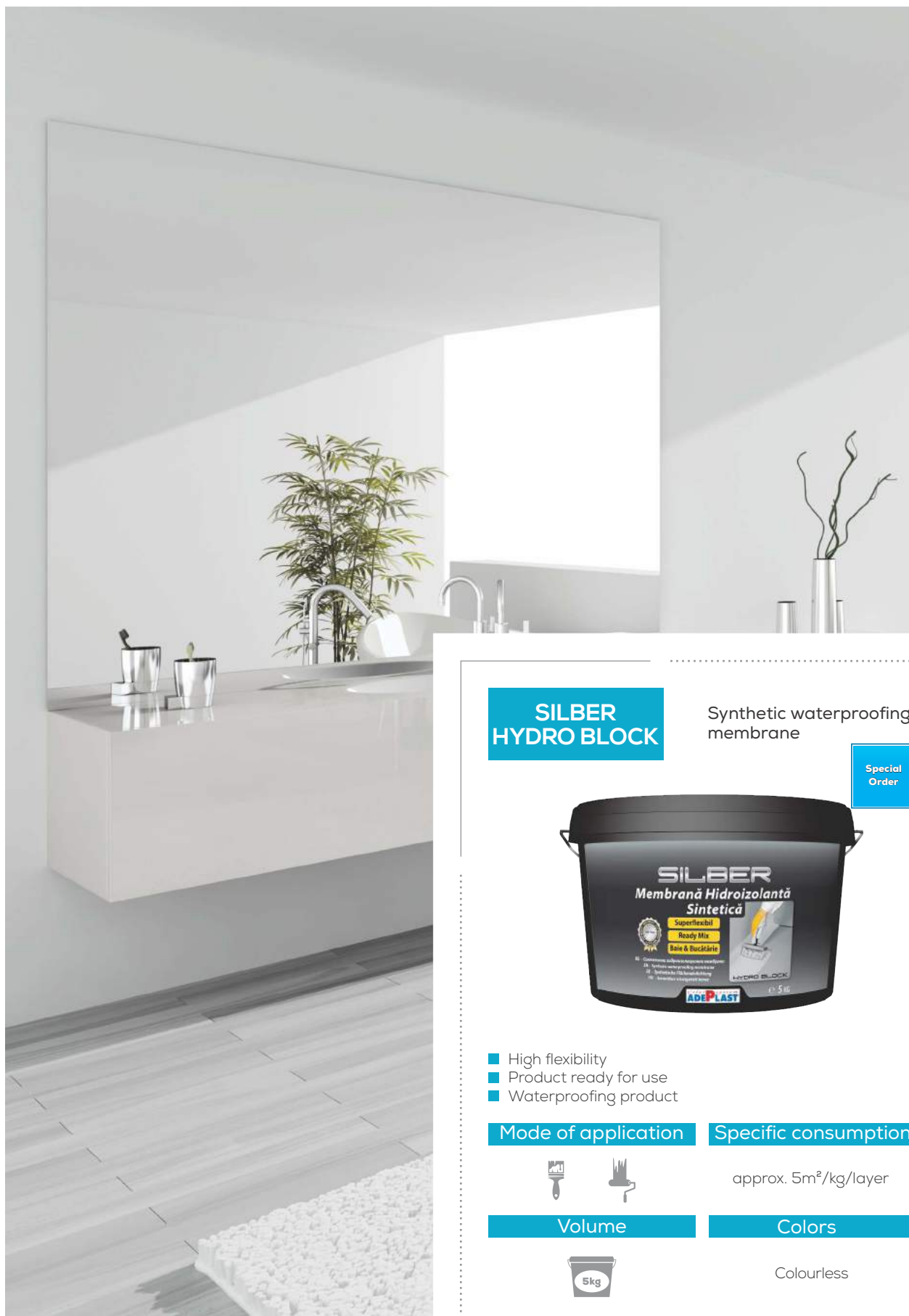
approx. 20m²/l/layer

Volume



Colors

Colourless



**SILBER
HYDRO BLOCK**

Synthetic waterproofing membrane

Special Order



- High flexibility
- Product ready for use
- Waterproofing product

Mode of application

Specific consumption



approx. 5m²/kg/layer

Volume

Colors



Colourless

**RENOVA
WALL
PROTECT**

Horizontal barrier
against water capillary
ascension

Special
Order



- Prevents the emergence and propagation of upward humidity;
- Easy application
- Increases the surface strength

Mode of application



Specific consumption

approx. 0.6m²/kg/layer

Volume



Colors

Colourless

**SILBER
PLASTER**



- Covers the surfaces imperfections
- Easy application
- Excellent adhesion

Mode of application



Specific consumption

approx. 0,3-0,5 kg/m²/1mm

Volume



Colors

White-beige



**AERIA STONE
CU PORUS X**

Water repellence solution
for facades and natural
stone



- Impregnation power
- Easy application
- High hydrophobicity

Mode of application



Specific consumption

approx. 5m²/kg/layer

Volume



Colors

Colourless

ADEPLAST BETONCONTACT

Bonding bridge



- High strength to alkaline support
- Easy application
- Very good adhesion

Mode of application



Specific consumption

approx. 5m²/kg/layer

Volume



Colors

Pink

O.S.B KLEBER

OSB wood chipboard adhesive

Comandă Specială



- High adhesion
- Easy processing
- Good flexibility

Mode of application



Specific consumption

approx. 2.5m²/kg/1mm

Volume



Colors

SAUBER ANTIMUCEGAI

Anti-mold solution



- Strong effect
- Easy application
- High impregnation

Mode of application



Specific consumption

approx. 20m²/l/layer
Consum in funcție de gradul de infestare cu microorganisme și de modul de aplicare.

Volume



Colors

Colourless

ULEI DE IN

Double boiled linseed oil



- Penetration and protection of wood fibres
- Easy application

Mode of application



Specific consumption

approx. 2.5m²/kg/layer

Volume



Colors

Colourless

A close-up photograph of a person's hands working on a wooden joint. The person is using a brush to apply a thick, white adhesive into a groove cut into a piece of light-colored wood. The background is blurred, showing more wood and a dark blue sleeve. The overall scene is well-lit, highlighting the texture of the wood and the consistency of the glue.

ADEPLAST®

Glue

GLUE

GLUE FOR WOOD



- Domestic and industrial purpose
- Provides a lasting bonding
- Excellent adhesion to wood support

Mode of application



Specific consumption

approx. 100-150g/m²/layer

Volume



Colors

Transparent film after drying



CONSTRUCTION GLUE



- Fast drying
- High adhesion to support
- Used as adhesive and addition for construction materials

Mode of application



Specific consumption

approx. 180-200g/m²/layer
on continuous surface. Addition ratio in mixture as addition in construction materials: 30-50%

Volume



Colors

white





ADEPLAST®

MOZAICP**LAST**®

MOSAIC PLASTER



**PROTECTIVE
SHIELD**

Discover the system unique on the market for colouring the socket plasters in over 700 colours, directly on site, **MOZAICPLAST**. A super flexible product with increased strength to mechanical shocks and bad weather conditions, it provides the surface with a protective shield against the environmental factors, preserving in time the colour intensity.

www.adeplast.ro

ADEPLAST®



office@adeplast.ro



+40 244 338 000



www.adeplast.ro